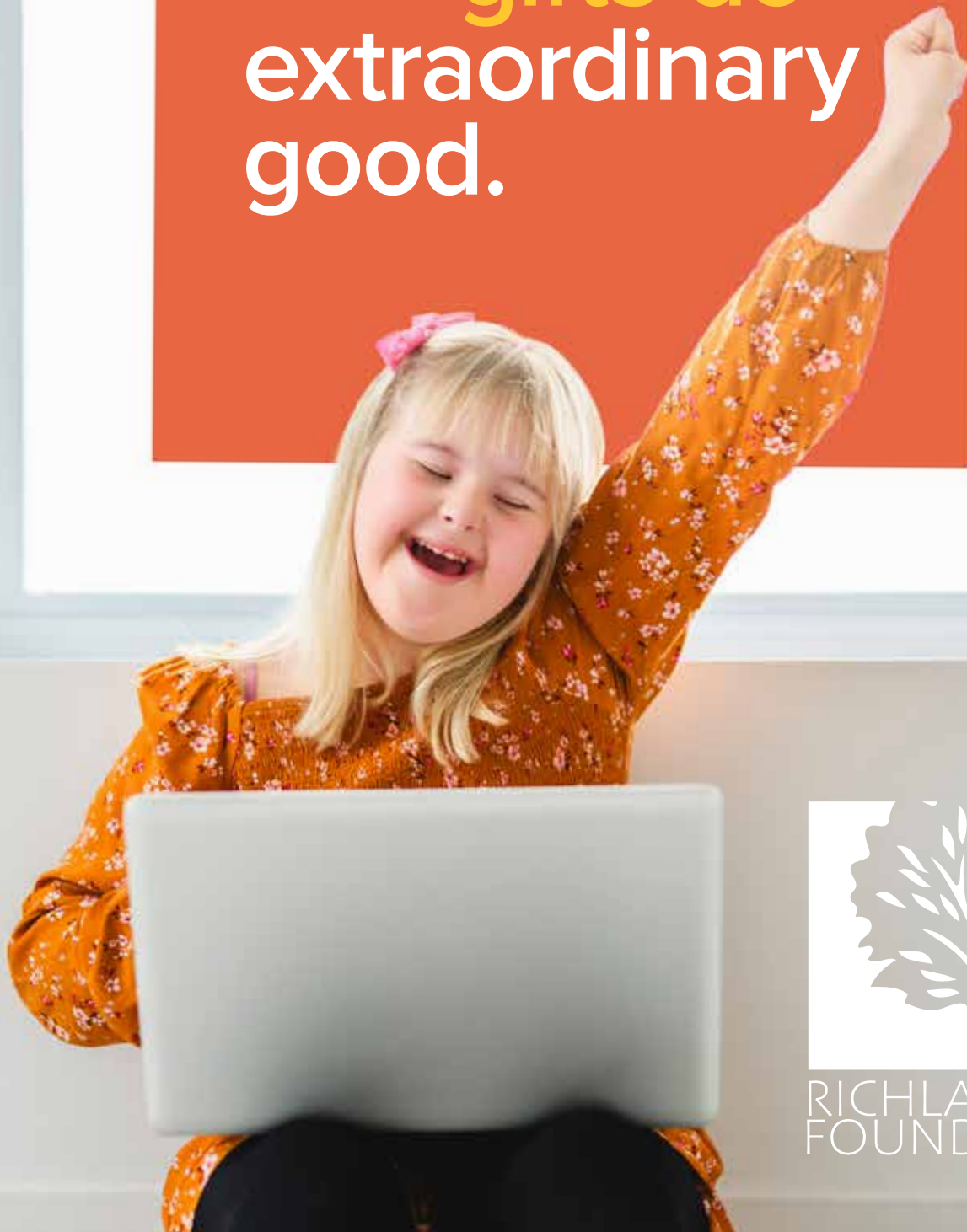


2025
ANNUAL
REPORT

Ordinary
gifts do
extraordinary
good.



RICHLAND COUNTY
FOUNDATION

Vision Statement: “Richland County Foundation will be a leader in community development, innovative granting and endowment building to enrich and improve the quality of life in our community.”



RCF President Allie Watson and RCF Board of Trustees Chair Dr. Theresa Roth-Groth



Ordinary Gifts Do Extraordinary Good

For 80 years the Richland County Foundation has been doing extraordinary good with ordinary gifts. We have made hundreds of millions of dollars in grants to help transform the lives of students attending college, kids going to summer camp, towns being beautified, teachers receiving classroom supplies, senior citizens being supported, and all kinds of organizations supporting all kinds of residents. None of this would be possible without the generosity of those who were raised here, live here, and choose to call Richland County home.

The majority of gifts we receive are ordinary: they come in the mail, they don't make headlines, they aren't presented on big checks in front of cameras. However, we are the recipient of an extraordinary gift from the Fernyak Family: many historic buildings in downtown Mansfield.

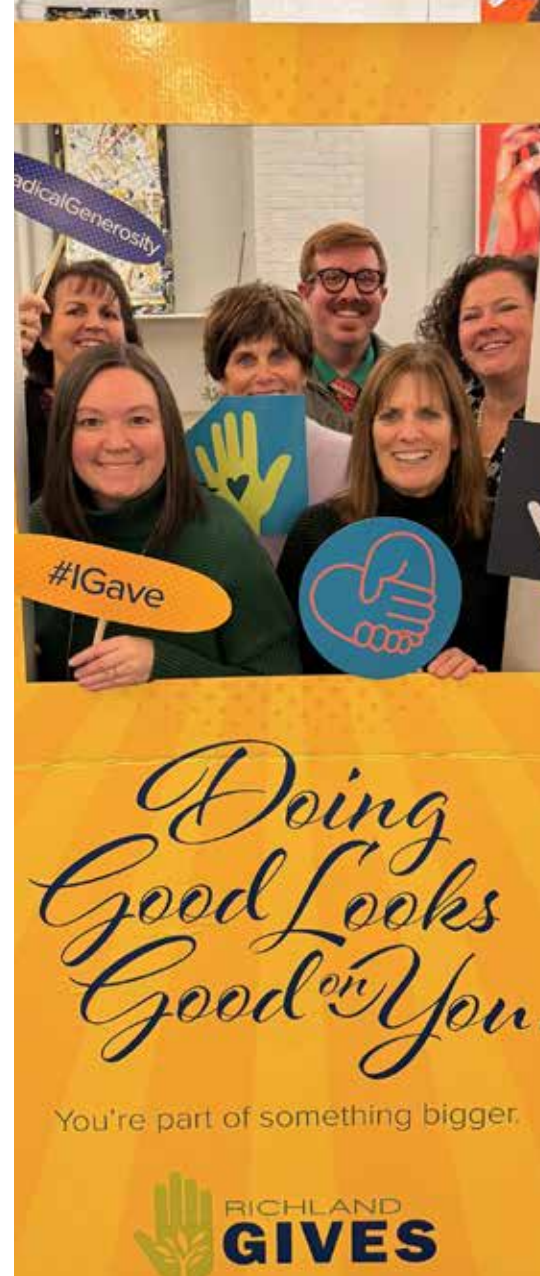
We learned quickly that many community foundations across the country invest in their downtowns as part of their impact investment strategy, so we were not unique in the endeavor. What makes us unique is the donation of buildings and that has not happened in any other city. This gift is extraordinary to Richland County and across the country, not just for the Foundation but because the impact on Mansfield will be felt for generations to come.

Since 2024 we have done research on property ownership, development, and management to prepare for this extraordinary gift. While we prepared for this gift, we spent this time getting our house in order. We updated our software to streamline grantmaking, check-writing, and gift receiving; we made capital improvements on our 134-year-old office (another extraordinary gift from the Fernyak Family in 2012), we started updating our policies, and reviewed programs that needed changed.

We experienced leadership transition as Dr. Theresa Roth-Groth stepped down as board chair in October. Lee Tasseff graciously accepted the accelerated timeline from his original plan of moving into this position in 2027, and Dakota Durbin stepped into the role of Incoming Chair.

While we take our next steps to move downtown forward in 2026, we reflect on the impact our grants have made on Richland County in 2025: from the \$250 grant to support Lucas Community Center's Donut Dash Fundraiser to the \$750,000 grant approved to support the Land Bank's efforts to revitalize neighborhoods over the next three years, we have seen impact in every corner of Richland County.

Allie Watson
President & CEO



Richland County Foundation staff try out the new photo booth front row: Siera Marth-May, and Maura Teynor, back row: Rachel Weber, Theresa Depperschmidt, Bobby Rhea, and Allie Watson

Generosity wins at Richland Gives

Richland Gives, an online giving event hosted by the Richland County Foundation, raised \$739,960 via 1,994 donors to benefit 88 Richland County nonprofit organizations. Since its inception in 2015, Richland Gives has raised \$4,535,291.

Richland Gives is designed to encourage people to contribute to local nonprofits they care about through a single giving website. The foundation hosted the day to build capacity, grow philanthropy, and make the community stronger. It allows local organizations to raise funds and awareness as well as cultivate new donors and reinvigorate lapsed donors.

The Foundation awarded \$80,000 in grants as prize incentives during the giving event.



Richland Source Reporter Hannah Martin poses with Margaret Martin of the Lucas Community Center.



Ashley Phillips, Dr. Joseph Bocka and Zuri Birmingham celebrate at the Leader Board Watch Party.



Tionna Perdue, Lucas Gerber, and Matthew Scruggs of the North End Community Improvement Collaborative at the Richland Gives party.



Pam Madore of the Richland Academy of the Arts accepts an award for the best social media post. She is pictured with Maura Teynor, RCF Chief Advancement Officer.

Winners

Small nonprofit – most donors:

- 1 Mansfield Noon Optimist Club
- 2 Mansfield Rotary Club
- 3 Music Academy of Karate & Empowerment

Small nonprofit – most dollars:

- 1 Taking Root Farms
- 2 Time for a Change Diaper Bank
- 3 Furniture Bank of North Central Ohio

Medium nonprofit – most donors:

- 1 Humane Society of Richland County
- 2 Visual Bucket List Foundation
- 3 North Central State College Foundation

Medium nonprofit – most dollars:

- 1 Lucas Community Center
- 2 Ohio Bird Sanctuary
- 3 North Central Ohio Land Conservancy

Large nonprofit – most donors:

- 1 St. Peter's School
- 2 Richland Pregnancy Services
- 3 Renaissance Performing Arts

Large nonprofit – most dollars:

- 1 Discovery School
- 2 Kingwood Center Gardens
- 3 Friendly House



Main Street Improvements

A key project outlined in the Mansfield Rising Plan is to improve the main corridors leading into and out of downtown.

Mansfield’s Main Street Corridor Improvement Project is a major \$20.3 million revitalization project transforming downtown by converting Main Street to two-way traffic, upgrading water and sewer lines, sidewalks, lighting, and landscaping from First to Sixth Streets. These upgrades will create a more pedestrian-friendly, accessible, and vibrant center with historic charm, aiming for completion in October 2026.

The project is funded by a mix of federal, state, and local sources including two grants from the Foundation.

Upper-Level Living

In 2024 the Foundation approved grant funding for the City of Mansfield to support renovations of historic buildings in downtown Mansfield. The renovations would create opportunities for people to live downtown above retail establishments.

Since 2018, when Mansfield Rising was created, the team knew having more people live downtown would immediately create a more vibrant community. Two grants were funded through the City: one for the brownstones on W. 3rd Street and the other for the property at the corner of Mulberry and W. 5th Street. These renovations are still in process and we look forward to more people living in downtown.

Brand Richland

A community brand was a top priority in the Mansfield Rising Plan. The purpose of branding is to weave a powerful and positive story to raise awareness about why this is a great place to live and conduct business.



Mansfield Rising’s branding campaign, Brand Richland, continues to evolve under the leadership of Destination Mansfield - Richland County and the Richland Area Chamber of Commerce. As organizers began work on the plan, it became clear the branding campaign needed to encompass far more than just downtown Mansfield. It became a countywide effort, including all cities and villages. In 2025, Brand Richland launched digital campaigns as an internal pride of place message along with a statewide effort to demonstrate Richland County as a place to live, work, build, and play.

The Foundation, Destination Mansfield-Richland County, Richland Area Chamber & Economic Development, City of Mansfield, Mechanics Bank, OhioHealth, Park National Bank, the Richland County Commissioners, and Richland Source have supported Brand Richland.



Vasbinder Fountain

Prior to their passing, Gene and Sally Goin made a grant through their Donor Advised Fund to restore the historic Vasbinder Fountain and create a connection to the north side of Park Avenue. The restoration includes complete disassembly, sandblasting, internal and external repairs, recasting as needed, and reassembly. The fountain will be re-dedicated in 2026.

Gene and Sally were the epitome of a couple who genuinely cared for one another and their community. For decades they were generous donors to the Foundation, most times anonymously, and frequently investing in the areas of Mansfield that meant so much to them when they were growing up.



BOARD OF TRUSTEES



First column
Karen Bierly
Dr. Joseph Bocka

* Denotes officers



Second column
Col. Troy Cramer
Braxton Daniels III
Dakota Durbin*



Third column
Chris Hiner
Laurie McKeon
Jana Mulherin



Fourth column
Dr. Theresa Roth-Groth*
Marcella Smith
Rand Smith

Fifth column
Jack Stewart*
Lee Tasseff *

STAFF



Seated left to right

Rachel Weber, CPA
Finance Director

Siera Marth-May
Senior Community Investment Officer

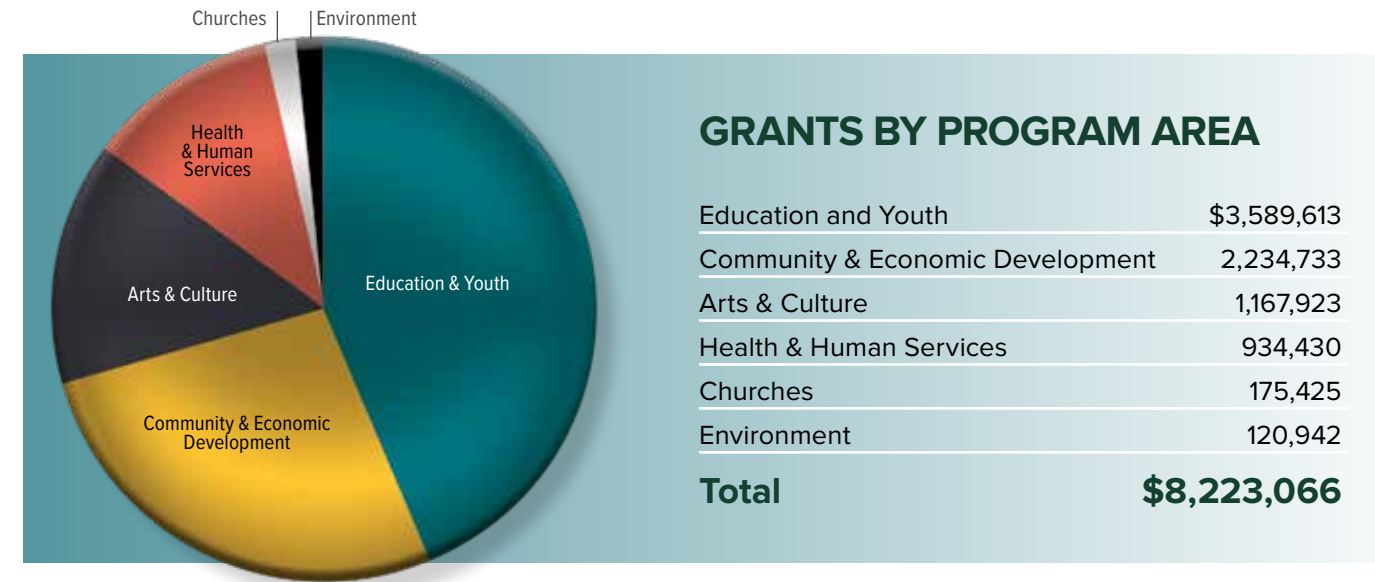
Standing left to right

Theresa Depperschmidt
Administrative Assistant

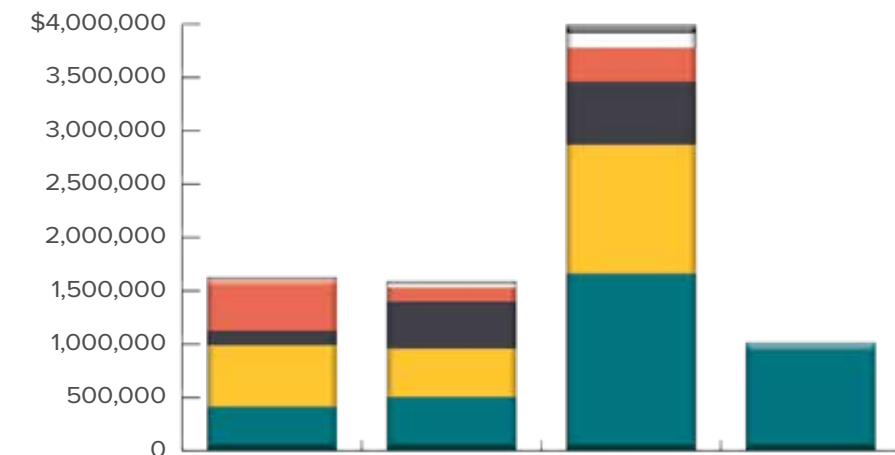
Allie Watson
President & CEO

Bobby Rhea
Community Investment Officer

Maura Teynor
Chief Advancement Officer



GRANTS BY TYPE



	COMPETITIVE	DESIGNATED	DONOR ADVISED	SCHOLARSHIP	TOTAL AWARDED
Education & Youth	\$412,409	\$501,961	\$1,659,602	\$1,015,641	\$3,589,613
Community & Economic Development	574,092	454,854	1,205,787		2,234,733
Arts & Culture	138,401	438,917	590,605		1,167,923
Health & Human Services	480,500	135,413	318,517		934,430
Churches		34,226	141,199		175,425
Environment	20,470	24,288	76,184		120,942
Total	\$1,625,872	\$1,589,659	\$3,991,894	\$1,015,641	\$8,223,066
	20%	19%	49%	12%	100%

**RICHLAND COUNTY FOUNDATION
STATEMENT OF ASSETS, LIABILITIES, AND NET ASSETS**

December 31, 2025 and 2024

	Accrual Basis 2025	Modified Cash Basis 2024
	<i>Total</i>	<i>Total</i>
ASSETS		
Assets		
Cash	\$ 1,390,840	\$ 7,574,485
Investments	258,705,612	219,733,222
Property and Equipment, Net	1,105,529	1,133,188
Other Assets	256,608	-
TOTAL ASSETS	\$261,458,589	\$228,440,895
LIABILITIES AND NET ASSETS		
Liabilities		
Grants & Accounts Payable	103,223	-
Accrued Expenses	16,757	-
Annuity Contracts Payable	46,737	56,467
Payroll Tax Withholding	11	-
Funds Held as Agency Endowments	11,922,329	10,678,911
Total Liabilities	12,089,057	10,735,378
Net Assests		
Net Assets	249,369,532	217,705,517
TOTAL LIABILITIES AND NET ASSETS	\$261,458,589	\$228,440,895

**STATEMENT OF REVENUE COLLECTED, EXPENDITURES PAID
AND OTHER CHANGES IN NET ASSETS**

Years Ended December 31, 2025 and 2024

	Accrual Basis 2025	Modified Cash Basis 2024
	<i>Total</i>	<i>Total</i>
REVENUE AND SUPPORT		
Contributions	\$ 5,057,567	\$ 8,707,656
Investment Income	35,428,483	22,125,434
Total Revenue and Support	\$40,486,050	\$30,833,090
Expenses and Other Deductions		
Program Services	7,633,906	8,871,725
Management and General	1,236,652	786,609
Total Expenses and Other Deductions	\$8,870,558	\$9,658,334
Increase (Decrease) in Net Assets	31,615,492	21,174,756
Net Assets at Beginning of Year	217,705,517	196,530,761
NET ASSETS AT END OF YEAR	\$249,369,532	\$217,705,517



Third Street Family Health Services provided a Food Pharmacy and delivered fresh produce to new and expecting mothers in the local area. The North End Community Improvement Collaborative's Urban Farm grew the high-quality produce. The Food Pharmacy was made possible in part by a Women's Fund grant.



The Richland County Foundation Board approved \$67,000 in education grants to support creative programs for K-12 teachers in local public and private schools.

Honoring a Beloved Teacher Through a Lasting Legacy

A new scholarship fund, the **Claire Siegenthaler Proto Scholarship Fund**, was established at the Richland County Foundation to honor the memory of an extraordinary educator, mentor, and community member whose life left a lasting mark on Mansfield City Schools and beyond.

It is a heartfelt reminder that one life, lived with kindness and purpose, can uplift a community.



The scholarship was created in loving memory of Claire Siegenthaler Proto, by her parents Pam and Tom Siegenthaler. Claire was a dedicated teacher who spent over 20 years shaping young minds with compassion, patience, and perseverance. Known for her unwavering support of her students, she had a gift for encouraging them to see their potential and believe in themselves. Her colleagues remember her as a quiet force—always kind, determined, and willing to lend a helping hand.

Claire passed away in the fall of 2024, surrounded by family and friends who loved her dearly. Her legacy now lives on through this scholarship, which will support graduates of Mansfield City Schools as they pursue college degrees or accredited career technical education certificates. It is a fitting tribute to a woman who believed deeply in the power of education.

Claire, along with her sister, Geneva Siegenthaler Cummins, grew up in a neighborhood filled with laughter, community, and many summer days swimming and playing.

From an early age, Claire stood out—not only for her accomplishments but for her warmth and generosity. She was Co-Valedictorian of the Mansfield Senior High School Class of 1990 and was an exceptional student and gifted musician. She played violin, viola, piano, and clarinet in both the school's orchestra and band, as well as the Mansfield Symphony Youth Orchestra. She was also a dedicated member of the high school swimming and tennis teams.

Her academic journey continued at Denison University, where she earned a Bachelor of Arts degree. She later completed her special education certification at Ashland University—where she also met the love of her life, Jefferson Proto. Together, they built a life raising two sons, Frederick and John, who were the light of her life.

Through this scholarship, Claire's legacy of learning, compassion, and perseverance will continue to inspire students for generations to come. It is a heartfelt reminder that one life, lived with kindness and purpose, can uplift a community.



The **Traffic Safety Fund** was created by the former **Richland Alternate Program (RAP)** Board of Directors to continue their mission of promoting traffic safety in Richland County. Although RAP is no longer an active nonprofit, its legacy lives on through this fund, which will provide grants to local schools and nonprofits for traffic safety education programs.

RAP was an alternative to jail for first-time driving under the influence offenders. Its core was an intensive program focused on driver intervention. The program was more than a series of lectures; it was a time for reflection and personal growth. It gave individuals an opportunity to evaluate their relationship with alcohol and other drugs, improve their decision-making skills, and develop the tools needed to live a more productive life.

The establishment of the Traffic Safety Fund ensures that the important work started by the RAP board continues to benefit the community for years to come.

The former members of the RAP Board of Directors included President Laura Pond as well as Tracee Anderson, Joe Cinadr, Mindy Dumbeck, John Kastelic, Wendy Gunder, Brian Gunder, Doug Laser, Matt Malone, Jason Murfield, Stewart Ryckman, and John Yatko.

Former Richland Alternate Program Board of Directors members John Kastelic, Laura Pond, and Wendy Gunder.



Raemelton received a grant to provide scholarships for equine-based therapies to individuals with physical and intellectual disabilities. The therapy engages and strengthens a student's muscles, improves motor skills, encourages core academic skills, and appropriate communication. RCF President Allie Watson and RCF Director of Finance Rachel Weber in a stable at Raemelton.



Over \$136,848 in career technical education scholarships were approved for students to earn a certification at a technical institution in 2025. The Scholarship Committee implemented a rolling deadline for CTE scholarships to meet various enrollment deadlines. In aligning with Ohio's Attainment Goal, the Foundation wants to help fill the gap between job openings and certified employees as well as lead the way to support workforce development through CTE scholarships.

Merris and Jean Welge

“The Richland County Foundation has worked well for us in three ways.

The Foundation provides several ways that we can support law enforcement, which is very important to us.

The Foundation provides a way to increase our income through the use of Charitable Gift Annuities.

The Foundation provides a way to decrease our income tax without itemizing deductions by accepting donations directly from our IRA, thereby reducing our taxable income.

They are great to work with!”



Kristine and Todd Lindeman

“We are grateful for our trusted relationship with the Richland County Foundation. As a donor and fund holder the Foundation has helped us establish an investment path that aligns with our goals for community impact. During the process of setting up our fund they listened and provided us with education on the different fund options. This made us not only feel confident in our investment but also made us feel a part of something greater. If you have ever considered learning more about how the Foundation through its donors are doing impactful community work, we encourage you not to wait.”



Mind Body Align Founder Annamarie Fernyak

“Partnering with the Richland County Foundation has empowered our team to deepen the impact of our work. Through the Foundation, we’re able to support projects rooted in self-awareness, creativity, community wellness, and purpose. It’s philanthropy with intention—and it’s helping to plant the seeds of lasting transformation in our community.”

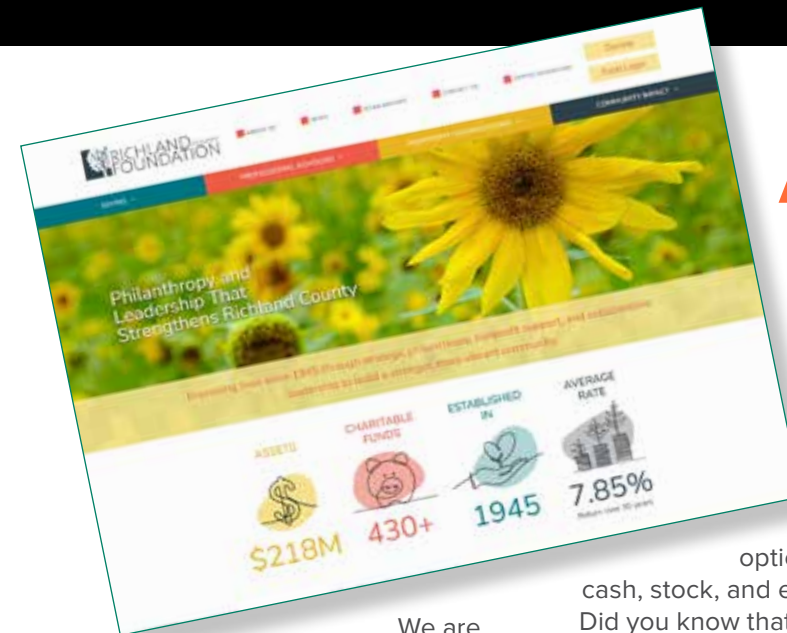
Kaleidoscope Community Conversations



For the second year, Kaleidoscope partnered with nationally recognized authors and thought leaders to help expand community engagement. The goal was to build greater social capital through diverse and inclusive conversations among interested individuals and groups.

Kaleidoscope was an opportunity to spark conversations among people from all over the community. It was where unexpected collaborations began to form. The Richland County Foundation, in partnership with the Mansfield Richland County Public Library, Renaissance Theatre, and Richland Source, aimed to increase trust across differences through Kaleidoscope.

Dr. Lerone Martin spoke at the Renaissance Theatre as part of the Kaleidoscope Series. Photo courtesy of the Renaissance Theatre.



A Fresh Look for a Stronger Community

We are excited to announce the launch of our new website. We have redesigned it with you in mind—our donors, professional advisors, nonprofit partners, and scholarship recipients. Our goal was to create a user-friendly experience that makes it easier to connect with the resources and information you need.

Smart Ways to Give

Whether you are looking to support a cause you care about or plan your

legacy, our website provides clear guidance on the best ways to give. You will find information on a variety of giving

options, including gifts of cash, stock, and even cryptocurrency. Did you know that donating appreciated cryptocurrency or stock directly to the Foundation allows you to avoid capital gains taxes? Our site makes it simple to understand the benefits of each option and make a smart financial decision while making a meaningful impact.

Enhanced Tools for Fundholders

For our fundholders, the new fund advisor portal is a game changer. Integrated directly into the site, this secure portal gives you instant, real-

time access to everything you need, including:

- Fund balances
- Account statements
- Grant history
- Important documents

This convenient tool lets you stay connected to your fund’s activity from any device, anytime.

Resources for Nonprofits and Students

Nonprofits applying for grants and students seeking scholarships will find a streamlined experience. The new site makes it easy to find detailed information on how to apply, eligibility requirements, and important deadlines.

We invite you to explore the new website and see all the ways we are working to build a stronger, more vibrant community together.

COMPETITIVE

Buckeye Imagination Museum
Fund Closure — \$15,710

Discovery School
Richland Gives - Matching Grant — \$7,980

Friendly House Association
Richland Gives - Matching Grant — \$3,000

Mansfield City Schools
Peace On My Block Community Festival — \$1,000

Mansfield-Richland County Spelling Bee
2025 Spelling Bee — \$500

Monsignor Edward C Dunn Foundation for Education
Richland Gives - Matching Grant — \$250

Music Academy of Karate & Empowerment
Richland Gives - Matching Grant — \$2,000

North Central State College Foundation
Richland Gives - Matching Grant — \$1,000

Richland Carrousel Park, Inc.
Richland Gives - Matching Grant — \$1,250

Richland Pregnancy Services
Richland Gives - Matching Grant — \$3,250

Ronald McDonald House Charities of Central Ohio
Helping Hands Program — \$10,000

The Ohio State University Foundation
Richland Gives - Matching Grant — \$1,000

St. Peter's School
Richland Gives - Matching Grant — \$7,000

The Visual Bucket List Foundation
Richland Gives - Matching Grant — \$4,500

Wayfinders Ohio, Inc.
Capital Campaign — \$150,000

YMCA of North Central Ohio
Richland Gives - Matching Grant — \$500

DESIGNATED

Ashland University
Library Books — \$728

Buckeye Council Boy Scouts of America, Inc.
Richland County Scouting (2 grants) — \$25,209
General Support — \$11,457

Children's Dyslexia Center
General Support — \$51,916

Clear Fork Valley Foundation
Grants and Scholarships — \$8,416

Friendly House Association
General Support (5 grants) — \$4,271
Camperships — \$312

Lucas Local Schools
Educational / Athletic Programs & Materials (6 grants) — \$25,330

Malabar Farm Foundation
Education & Preservation Projects — \$15,755
Passenger Trailer — \$10,000

Mansfield Aviation Club
2025 Scholarships — \$3,000

Mansfield Christian School
2025 Scholarships — \$1,200

Mansfield City Schools
Art and Music Programs — \$796
Tutoring Support — \$2,500

Methodist Theological Seminary
Scholarship for a Richland County Resident — \$289

North Central State College
Financial Aid to Richland County Students — \$4,864

North Central State College Foundation
General Support — \$44,667

The Ohio State University - Mansfield
Scholarship Support — \$32,394
Business Development Support — \$33,210

Faculty Development Support — \$8,555
Financial Aid to Richland County Students — \$19,457

Ontario Local Schools
General Support for Technology Programs — \$9,686

Richland Carrousel Park, Inc.
General Support (2 grants) — \$70,611
Air Conditioning Replacement — \$21,980

Richland County Children Services
The Children Services Gift Fund (3 grants) — \$3,891

Richland County Children's Auxiliary, dba The New Store
General Support for the New Store (2 grants) — \$690

Richland Pregnancy Services
General Support — \$3,719

St. Peter's School
2025 Scholarships — \$800

Trapshooting Hall of Fame
General Support — \$51,916

Wayfinders Ohio, Inc.
General Support — \$227

YMCA of North Central Ohio
General Support (4 grants) — \$9,605
Support of Women & Children's Programs (4 grants) — \$24,209
Building & Equipment Maintenance Support — \$301

DONOR ADVISED

Ashland University
Grounds Greenhouse Project — \$20,000

Ashland University Ashbrook Center
General Support — \$10,000

Awaken Pittsburgh
The Mindful Family Project — \$2,000

Buckeye Council Boy Scouts of America, Inc.
Waterfront Building Project — \$100,000
Operations — \$12,000
Investment in Character — \$20,000
Richland Gives — \$500

Buckeye Imagination Museum
General Support — \$50,000
Internship Program — \$4,800

Chai Lifeline Inc.
General Support — \$5,000

Cleveland Center for Arts & Technology
General Support — \$1,000

Denison University
Annual Campaign — \$2,500

Discovery School
Capital Campaign (5 grants) — \$381,000
Support through Richland Gives — \$28,000
General Support — \$5,000
50th Anniversary Reunion — \$5,000

Friendly House Association
New Landscape — \$397
Richland Gives — \$5,500
Hidden Hollow Nature Lodge — \$9,000
Camperships — \$1,150

Glimmerglass Festival
Facility Improvements & Capacity Building — \$25,000

Hartwick College
Life-Balance Initiatives — \$6,667

Historic Saranac Lake
3 Pillars Campaign — \$8,333

Honey From the Rock LLC
Clothes for Foster Kids — \$10,000

Hospice Of Western Reserve
Children's Bereavement Camp — \$500

Love On A Mission
Fly Your Flag — \$3,000
Summer Intern — \$4,800

Lucas Baseball Softball League
General Support — \$1,500

Lucas Local Schools
Defensive Driving Courses — \$4,150
Scholarships — \$2,000
Lunch Funding (2 grants) — \$6,000
Track Team Hurdles — \$1,000

Make A Wish Foundation
Granting Wishes (2 grants) — \$25,000
Richland County Patients — \$3,000

Malabar Farm Foundation, Inc.
Ceely Rose Survival Run Sponsorship — \$500

Mansfield Christian School
Capital Campaign — \$150,000

Mansfield City Schools
Afterschool Programming (2 grants) — \$60,626
Clothing & S.A.F.E. Program Needs — \$2,500
Field Trip & Family Involvement Activities — \$38,562

Malabar Jim "Basketball" Jones Basketball Incentives — \$800
Malabar PBIS Pantry — \$4,629
Peace On My Block — \$1,376
Tutoring Support — \$1,000

Mid-Ohio Youth Mentoring
Richland Gives — \$250

Music Academy of Karate & Empowerment
General Support — \$5,000

North Central State College Foundation
Respiratory Readiness Program and Scholarship — \$25,000

Pleasant Hill Outdoor Center
Capital Campaign — \$40,000

Raemelon Therapeutic Equestrian Center
General Support — \$500
Equine Based Therapy Scholarships (2 grants) — \$29,625
Internship Program — \$4,696

Richland Carrousel Park, Inc.
Adopt a Horse Campaign — \$5,000
Richland Gives — \$10,250

Richland County Children's Auxiliary, dba The New Store
General Support — \$3,000
Richland Gives — \$5,250

Richland Pregnancy Services
General Support (2 grants) — \$550

Ronald McDonald House Charities of Central Ohio
Housing for Parents — \$5,000

Shelby Diaper Pantry
Richland Gives — \$1,200

St. Peter's School
Internship Program — \$2,400
General Support through Richland Gives — \$1,000
Social Emotional & Resilience Coaching — \$6,000
Social Emotional Learning Curriculum — \$5,833

Stellar Robotics
K-3 Team — \$700

Stirrup Courage
General Support — \$5,000

The Brookwood School
Facility Performance Improvement — \$3,000

The Ohio State University College of Arts & Science
Environmental History Programs — \$25,000

The Ohio State University Foundation
BSET Scholarships — \$2,500
Financial Aid to Richland County Students — \$5,000

Visual Bucket List
General Support (2 grants) — \$650

Wayfinders Ohio, Inc.
Richland Gives — \$250
General Support (2 grants) — \$3,500
Capital Campaign (2 grants) — \$145,000

Wayne Center For the Arts
ArtReach Programming for At-Risk Youth — \$8,000

YMCA of North Central Ohio
Sports Complex (3 grants) — \$227,500
Internship Program — \$7,659
Youth and Government Program — \$1,500
Open Doors — \$50,000

COLLEGE AND CAREER TECHNICAL EDUCATION SCHOLARSHIPS
504 GRANTS — \$ 1,015,641

EDUCATION PROGRAM GRANTS
60 GRANTS — \$60,716



Campers explored and learned about nature at Critter Camp which was funded by a Summertime Kids Grant. Note his special boots.



The Foundation supported summertime programs focused on children. Camp Invention in Shelby was one of 26 organizations that received funding.

EDUCATION & YOUTH (continued)

SUMMERTIME KIDS PROGRAM 27 GRANTS \$54,890

- City of Mansfield** Summer Fun at North Lake Park
- First English Lutheran Christian Day School** Learning to Kayak Program
- First Lutheran ABC Learning Center** Summer Fun Program
- Flying Horse Farms** Residential Summer Programming
- Friendly House Association** Summer Fun Program - Staycation Field Trips
- Friends of the Richland County Park District** Critter Camp
- Hoops for Youth Foundation** Hoops for Youth Summer Program
- Independent Living Center of NCO** 2025 Artful Innovators
- Kingwood Center Gardens** Kingwood Kids Summer Camp
- LifeCare Alliance** Camp Hamwi
- Love On A Mission** Summer Zine Project
- Mansfield Community Playhouse** Little Mermaid Jr.
- North End Community Improvement Collaborative** Summer Trades Camp
- Pioneer Career & Technology Center** Lights, Camera, Action, and Explore
- Recreation Unlimited** Youth Summer Residential Camp
- Renaissance Performing Arts** Broadway Camp and Broadway Camp Showz
- Richland Academy of the Arts, Inc.** Keyboard for Kids
- Richland County Board of DD** Richland Newhope Campership Program
- Shelby Church of the Nazarene** Welcome to the Real World
- Shelby City Schools** Camp Invention
- Sisters Building Sisters, Inc.** Summer Wellness Program
- Skate Ohio** Kids Skate Day
- The Ohio State University Foundation** Electronics for Beginners & Intermediate Users
- Third Street Family Health Services** 5th Annual Block Party Games & Bounce Houses
- Unstoppables Youth Sports** Unstoppable Youth Baseball
- YMCA of North Central Ohio** Y on the Fly
- Zoe's Learning Center** Summer Field Trip

WOMEN'S FUND GRANTS 12 GRANTS \$87,863

- Be Elite Inc**
She's Got Game – Elite Girls Skill and Leadership Development
- Catalyst Life Services**
Suited for Her Success
- GroundTruth Project, Inc.**
Richland County Childcare Reporting
- Mid-Ohio Youth Mentoring**
Fearless & Fierce - Empowerment and Self-Defense Series
- North Central State College Foundation**
Expanding Child Development
- Ontario Local Schools**
Girls in STEM Day
- Richland Academy of the Arts, Inc.**
StrongHer TogetHER
- Rubies Womens Group Inc**
EmpowHerED Finances
- Shelby City Schools**
GOLD (Girls Owning Lives of Dignity) ARC Mentoring
- Third Street Family Health Services**
Mobile Food Pharmacy
- YWCA of Northwest Ohio**
Child Care Resources and Training
Child Care Provider Mini-Grants

COMMUNITY & ECONOMIC DEVELOPMENT



96 Grants - \$2,234,733

COMPETITIVE

- City of Mansfield**
Liberty Park Bath House — \$200,000
Sterkel Park — \$166,666
Therapy Canine - Charlie — \$5,676
- Humane Society of Richland County**
Richland Gives - Matching Grant — \$5,000
- Kingwood Center Gardens**
Richland Gives - Matching Grant — \$4,500
- Lucas Community Center**
Deck Project — \$40,000
Richland Gives - Matching Grant — \$6,000
- Mansfield Noon Optimist Club**
Richland Gives - Matching Grant — \$6,000
- Mansfield Rotary Club Foundation**
Richland Gives - Matching Grant — \$3,500

- Philanthropy Ohio**
Transfer of Wealth Study — \$5,000
- Richland Community Development Group**
2026 Economic Forecast Breakfast — \$500
BrandRichland Marketing Plan — \$6,250

- Richland County Land Reutilization Corporation**
Thriving Home — \$125,000

DESIGNATED

- City of Ontario**
Police Department Shooting Range — \$15,000
- Kingwood Center**
General Support (5 grants) — \$66,730
- Mansfield Richland County Public Library**
Books and Talking Books — \$3,399
General Support — \$1,097
- Mansfield Rotary Club Foundation**
McGowan Courage Awards — \$7,099
- North End Community Improvement Collaborative, Inc.**
General Support (5 grants) — \$304,548
- Ohio Genealogical Society**
General Support — \$288
- Richland Community Development Group**
Fox Glen Park Project — \$1,915

- Richland County Habitat For Humanity**
General Support — \$549
- United Way of Richland County**
General Support (2 grants) — \$51,485
Catholic Charities: Refrigerators & Freezers — \$2,744

DONOR ADVISED

- 4 Leaf Rover**
General Support — \$5,000
- Altrusa Club of Mansfield, Ohio Foundation, Inc.**
Spring Bash — \$1,000
Liberty Park Bath House — \$5,000
Main Street Project - Vasbinder Fountain — \$500,000
Safety Town Program — \$500
Therapy Canine Charlie — \$1,000
Trash Cans at Sterkel Park — \$2,175
- City of Ontario**
Basketball Court Renovation (2 grants) — \$10,000

- Community Foundation of Otsego County, Inc.**
2026 Programming — \$25,000

- Downtown Mansfield, Inc.**
Beautification Project — \$500
Internship Program — \$4,800

- Humane Society of Richland County**
Dogs, Donuts, Drinks — \$500

- Idea Works**
2025 Match and Marketing Efforts — \$70,893

- Island Safe Harbor Animal Sanctuary Inc.**
General Support (2 grants) — \$15,000

- Kingwood Center Gardens**
Internship Program (2 grants) — \$12,000
Honoring the Past; Growing the Future — \$4,000
General Support through Richland Gives — \$20,000
Reflection Pool Support through Richland Gives — \$2,500

- Lucas Community Center**
General Support through Richland Gives — \$2,000
5K Support — \$250
Food Pantry — \$3,000

- Mansfield Rotary Club Foundation**
Scholarship Support — \$2,000

- North End Community Improvement Collaborative, Inc.**

- RGO Farm Gap Funding — \$60,500
Internship Program — \$4,800
General Support — \$250,000
Fractional CFO — \$76,780
Organizational Capacity Building (2 grants) — \$13,575
Men's Garden Club-Annual Meeting & General Support — \$5,000
Urban Farm Support through Richland Gives — \$300

- Red Clay Ranch Equine Rescue and Sanctuary**
General Support — \$250

- Richland Community Development Group**
General Support — \$9,330
Heart of the City Cruise-In Support (2 grants) — \$5,000
Arts Sector 2025 Events — \$5,000

- Richland County Habitat For Humanity**
Internship Program — \$4,800

- Richland County Land Reutilization Corporation**
Thriving Home — \$41,667

- United Way of Ashland County**
2026 Campaign — \$5,000

- United Way of North Central Ohio**
Basic Needs Assessment and Support Program — \$6,667

- United Way of Richland County**
Allocations & Initiative Programming — \$25,000
Richland Gives — \$5,000



The City of Mansfield received a grant to restore the former Liberty Park Bathhouse into an open-air pavilion. The project will restore and preserve the historic sandstone structure of the bathhouse while creating a new public gathering space.



ARTS & CULTURE **74 Grants - \$1,167,923**

COMPETITIVE

Renaissance Performing Arts

Richland Gives -
Matching Grant — \$1,500
Kaleidoscope: Community Conversations — \$36,401

Richland Academy of the Arts, Inc.

Empower the Arts Campaign — \$100,000
Richland Gives - Matching Grant — \$500

DESIGNATED

Children's Theatre Foundation, Inc.

General Support — \$1,771

Kingwood Center

General Support — \$1,665

Mansfield Art Center

General Support (6 grants) — \$45,128

Mansfield Community Playhouse

General Support — \$505

Plymouth Area Historical Society

General Support — \$5,000

Renaissance Performing Arts

Theatre General Support (7 grants) — \$275,479
Mansfield Symphony General Support (5 grants) — \$77,373
Mansfield Youth Orchestra General Support (2 grants) — \$3,500

Richland Academy of the Arts, Inc.

General Support — \$832

Richland County Historical Society

General Support — \$18,590
Copus Monument Support — \$9,074

DONOR ADVISED

Avon Theatre Film Center, Inc.

General Support — \$3,000

Fenimore Art Museum

Youth Programming Support & Regional History Center — \$8,333
Youth Initiatives for Main Gallery Renovation — \$20,000

Main Street Wooster, Inc.

Advancing the Arts District: Phase Two — \$5,000

Mansfield Art Center

General Support (3 grants) — \$37,667
Internship Program (2 grants) — \$16,800
Endowment Campaign — \$20,000
Summer Arts Program — \$8,884
General Support through Richland Gives — \$5,000



A Summertime Kids grant helped fund the Kingwood Kids Summer Camp. Guest instructor and artist Julie Parsons guided a class on Botanical Arts using natural materials and spray paint, campers created nature-inspired masterpieces.

Mansfield Community Playhouse

Capital Campaign (4 grants) — \$57,800
Capital Campaign through Richland Gives — \$2,000
General Support through Richland Gives — \$10,000

Mansfield Reformatory Preservation Society

General Support through Richland Gives — \$2,000

Morgan Art of Papermaking

Conservatory & Educational Foundation
General Support — \$500

Renaissance Performing Arts

Mansfield Symphony Orchestra Support — \$17,333
Internship Program (2 grants) — \$12,000
Angel and Development Tickets — \$25,000
Marketing and Operation Bridge Building — \$70,000
Classical Mansfield — \$20,000
General Support (3 grants) — \$102,500
General Support through Richland Gives (2 grants) — \$500

Richland Academy of the Arts, Inc.

Empower the Arts Campaign (4 grants) — \$128,334
Capital Campaign through Richland Gives — \$500
New Scissor Lift — \$15,036

Shakespeare Company of Mansfield

Shakespeare in Mansfield City Park — \$2,418

DESIGNATED

Alzheimer's Association-Northwest Ohio Chapter

General Support — \$473

American Red Cross

General Support (2 grants) — \$705

Catalyst Life Services

General Support (2 grants) — \$7,229

Catholic Charities

General Support (2 grants) — \$1,127

Domestic Violence Shelter, Inc.

General Support — \$2,311

HEALTH & HUMAN SERVICES **85 Grants - \$934,430**

COMPETITIVE

Buddys Buddies dba Service Dog United

General Support — \$1,000

Catholic Charities

Community Emergency Services & Adult Advocacy — \$5,000
Richland Gives - Matching Grant — \$1,000

Domestic Violence Shelter, Inc.

Richland Gives - Matching Grant — \$2,000
Safe Haven for Kids — \$100,000

Friends of 179th Airlift Wing

Richland Gives - Matching Grant — \$500

Furniture Bank of North Central Ohio

Richland Gives - Matching Grant — \$1,500

Mid Ohio Guardianship Services, Inc.

Richland Gives - Matching Grant — \$250

Richland Public Health

Pediatric AED Equipment & Education — \$83,333

The Salvation Army

Emergency Social Services — \$40,000

Starfish Project of Richland County

Richland Gives - Matching Grant — \$250

Taking Root Farms

Field of Opportunities — \$166,667
Richland Gives - Matching Grant — \$5,000

Time For A Change Diaper Bank

Richland Gives - Matching Grant — \$4,000



The Salvation Army was awarded a grant for its Emergency Social Services program. Households that teeter on the edge of poverty are forced to choose between transportation, housing, and food expenses. The program includes a soup kitchen, food pantry, direct financial assistance for utilities to prevent homelessness, and seasonal assistance. The program attempts to aid in self-sufficiency for vulnerable populations and reduce reliance on public assistance.

HEALTH & HUMAN SERVICES (continued)

Mansfield Cancer Foundation

General Support (4 grants) — \$35,708

OhioHealth Foundation

Mansfield Hospital — \$548

OhioHealth Mansfield Hospital

General Support — \$1,979

Richland Newhope Industries, Inc.

Program Support (3 grants) — \$23,869

The Salvation Army

General Support (8 grants) — \$23,518
Dewald Community Center — \$35,000

Shelby Help Line Ministries

General Support — \$387

Third Street Family Health Services

General Support — \$248

Volunteers of America

General Support for Richland County — \$2,311

DONOR ADVISED

ACTS 4 Love Inc

Items for Cancer Patients — \$300

The Accomplis Collective, Inc.

Maharlika Martial Arts Concepts -
General Support — \$5,000

Warrior Women Project Educational

Internship — \$5,000

Alzheimer's Association-Northwest Ohio Chapter

Expanding Outreach/Increasing Impact — \$6,667

American Red Cross - East Central Ohio Chapter

Disaster Preparedness & Resiliency in the Richland County Area — \$14,000

Avita Health Foundation

Avita Oncology Project — \$25,000

Catalyst Life Services

Internship Program — \$4,800
General Support through Richland Gives — \$5,000

Catholic Charities

Food Pantry — \$5,000
Food Pantry Support through Richland Gives — \$1,000

Catskill Area Hospice and Palliative Care dba Helios Care

Updating Technology & Offering Support Services for the Benefit of Patients — \$6,667

Community Health Access Project Hub

Dolly Parton Imagination Library — \$650
General Support through Richland Gives — \$250

Domestic Violence Shelter, Inc.

Internship Program — \$9,600

Family Planning of South Central New York

Access to Healthcare — \$10,000

Furniture Bank of North Central Ohio

Kids Beds & Mattress Program (2 grants) — \$10,500

Greater Cleveland Food Bank

Hunger Relief Efforts in Richland/Ashland Counties — \$25,000

GroundTruth Project, Inc.

It Takes A Village: Child Care Is Everyone's Business — \$7,500

Healthnetwork Foundation, Inc.

General Support — \$5,000

Hope Hollow

Support for Cancer Patient Families — \$300

NAMI of Richland County

Building Renovations — \$300
Internship Program — \$9,600

OhioHealth Foundation

Capital Campaign — \$35,000

Pathfinder Village Foundation

Farmstead Employment Training & Retail Center — \$5,000

Rails to Trails of Wayne County

Close the Gap - Additional Necessary Earthwork — \$8,333

Rubies Women's Group

Van Purchase — \$300
Internship Program — \$4,800

The Salvation Army

General Support through Richland Gives — \$250

Shalom Christian Missions

Mission Support — \$900

Springbrook Foundation

Preschool Speech Therapy Services (2 grants) — \$35,000

St. Jude Children's Research Hospital

St. Jude Walk Event — \$10,000

Taking Root Farms

Field of Opportunities Campaign — \$1,000
General Support through Richland Gives — \$1,000

Third Street Family Health Services

Internship Program — \$4,800
Linkage to Care Program — \$25,000
Marketing Initiative & General Support — \$20,000

Time For A Change Diaper Bank

General Support — \$3,000

Wooster Community Hospital Foundation

Healing Horizons: Transforming Rooftop Views into Restorative Art — \$5,000

Wounded Warrior Project, Inc.

General Support — \$2,000



YOUR GUIDE TO CREATING A LEGACY OF GOOD

EXPLORE TAX SMART, COMMUNITY-FOCUSED WAYS TO MAKE A LASTING DIFFERENCE

There are many ways to support the causes you care about and create a legacy that reflects your values. Whether you're planning ahead or ready to give today, the Richland County Foundation can help you make meaningful choices that strengthen our community.



MAKE THE MOST OF YOUR IRA

If you're 70½ or older, a tax-free transfer from your IRA can provide immediate support to the Richland County Foundation. This simple giving strategy reduces your taxable income while making a powerful difference close to home. Our team can help you explore whether this option is right for you.

GIVE SMARTER WITH APPRECIATED ASSETS

Donating stock or closely held business interests can provide significant tax benefits while maximizing your impact. You'll receive a full fair-market-value deduction and avoid capital gains taxes, allowing more of your gift to support the community you care about.

INCLUDE A GIFT IN YOUR WILL OR TRUST

After caring for loved ones, many donors choose to leave a gift in their estate plans to support Richland County's future. A bequest of any size can honor your values for generations and ensure your legacy continues to make a difference in the community. We're here to walk you through your options.

START A FAMILY GIVING TRADITION

A Donor Advised Fund creates a personal, flexible, and family-centered approach to philanthropy. It's a meaningful way to bring loved ones together, discuss shared values, and support causes important to you. Our knowledgeable staff will help you build a charitable plan that grows with your family.



A GIFT THAT PAYS YOU INCOME

For donors 60 and older, a Charitable Gift Annuity offers stable, fixed payments for life while supporting the Foundation's mission. This option provides financial confidence today and creates a legacy of good for tomorrow.

WE'RE HERE TO HELP YOU GIVE WITH PURPOSE

No matter how you choose to give, we are ready to provide personalized guidance tailored to your charitable goals. Together, we can build a brighter, stronger Richland County today and for years to come.

419-525-3020
richlandcountyfoundation.org

Maura Teynor
Chief Advancement Officer
mteynor@rcfoundation.org

Rachel Weber
Director of Finance
rweber@rcfoundation.org



CHURCHES

32 Grants - \$175,425

DESIGNATED

First Christian Church
General Support — \$406

First Congregational Church
General Support (5 grants) — \$28,753
Individual Assistance Program — \$500
Music Department Support — \$2,079

Mansfield 1st EPC
General Support (2 grants) — \$1,883

Saint John's United Church of Christ
General Support — \$606

DONOR ADVISED

Crossroads Community Church
City Center — \$5,000
General Support — \$5,000

First Congregational Church
Endowment — \$1,000
Intergenerational Community Program
Coordinator — \$10,000
General Support (2 grants) — \$3,500

First United Methodist Church
Richland County Legal Clinic — \$1,098

Grace Episcopal Church
Food Pantry (3 grants) — \$3,600

Holy Comforter Episcopal Church
General Support — \$500

New Jerusalem Progressive Church of God in Christ
Local Ministry Missions — \$5,000

St. Anne's Episcopal Church, Inc.
General Support — \$500

St. Paul Outreach (SPO)
General Support — \$10,000
Young Adult Chapter — \$75,000

St. Peter's Parish
Music Series (3 grants) — \$10,500

The River Church
HVAC Improvements & Stove — \$10,500

**GRAND
TOTAL
\$8,223,066**



The Richland B&O Bike Trail opened a new tunnel and trail connector along South Trimble Road in Mansfield. The project was funded by federal, state, and local sources along with a grant from the Foundation. Longtime bike trail supporters Rani and Ray Piar attended the ribbon cutting.

ENVIRONMENT

27 Grants - \$120,942

COMPETITIVE

Forgotten Felines of Richland County, Inc.
Richland Gives - Matching Grant — \$250

North Central Ohio Land Conservancy, Inc.
Expansion of the Clear Fork Valley Scenic Trail — \$14,220
Richland Gives - Matching Grant — \$1,000

Ohio Bird Sanctuary
Richland Gives - Matching Grant — \$5,000

DESIGNATED

Friends of the Richland County Park District
General Support (2 grants) — \$1,079

Ohio Bird Sanctuary
General Support — \$23,209

DONOR ADVISED

Friends of the Richland County Park District
Internship Program (2 grants) — \$12,000

Heartwood, Inc.
General Support — \$1,000

Highlands Nature Sanctuary
General Support — \$1,000

Killbuck Watershed Land Trust
General Support — \$500

North Central Ohio Land Conservancy, Inc.
General Support — \$1,000
Preserving Nature Along the Clear Fork Valley Scenic Trail — \$6,667
General Support through Richland Gives — \$2,250

Ohio Bird Sanctuary
Internship Program (2 grants) — \$12,000
General Support — \$1,000
Early Education Outreach Programs — \$15,000
Fall Mural Project — \$300

Ohio Environmental Council
General Support — \$1,000

Ohio Federation of Soil & Water Conservation Districts
Internship Program — \$4,800

Philanthropic Ventures Foundation
Sustainable Future Outdoor Academy — \$5,000

SoundWaters, Inc
General Support — \$1,000

West Creek Conservancy
Clear Fork Preserve North Phase II — \$8,333

Western Reserve Land Conservancy
Restoration of the Black Fork Forest Preserve — \$3,334



A **Gift of Grain Fund** was established by the Richland County Foundation Board of Trustees to connect with the agricultural sector in our county. The Foundation provided an initial \$15,000 to seed the fund. The fund will be used to support agricultural nonprofits.

Farmers looking to minimize their tax liability while contributing to their community can donate crops to the Foundation at a local elevator. Accounts are set up at Centerra Co-op in Mansfield, Sunrise Cooperative in Crestline, Poet Bioprocessing in Marion, and Central Ohio Co-Op which has many locations.

Farmers should consult with their tax advisor to determine whether a donation of commodities is appropriate to their tax situation.

Anyone can donate to the Gift of Grain Fund which also accepts gifts of cash, appreciated stock, from traditional IRAs, and other non-cash assets.

For details on how to make a Gift of Grain, go to the "Giving" tab richlandcountyfoundation.org.



The Richland County Farm Bureau won the American Farm Bureau County Activities of Excellence Award for its innovative "Cultivating Minds" program, which promotes agricultural literacy in schools and libraries with educational kits and activities, earning recognition at the 2026 AFBF Convention in Anaheim. The program funded by the Foundation's Gift of Grain Fund was a collaborative effort with Richland Soil and Water Conservation District and the Mansfield Richland County Public Library. Photo: Jill Arnett taught a lesson from one of the educational kits.

The Gift of Grain Fund supported WNCO Radio's "Feed the Farmer" program. Listeners nominated local farms, and the station delivered free meals to recognize hardworking farmers, promoting community support for agriculture. In 2025, the initiative highlighted Schumacher Farms and the Charlie Cooke Farm.



Honoring a Trailblazer: Scholarship Fund Established in Memory of Laura Evilsizor McElfresh



A new scholarship fund, The Laura Evilsizor McElfresh Fund, has been established at the Richland County Foundation, to preserve the memory and celebrate the legacy of a remarkable former teacher, athletic director, and assistant principal. The fund will award scholarships to Mansfield Senior High School graduates pursuing either a college degree or a career technical education certificate.

Laura began her inspiring career at Mansfield City Schools as a physical education teacher, but she quickly became a champion for young women in athletics. She didn't just teach, she personally organized the district's first girls' tennis and track teams and going on to coach both.

Her trailblazing spirit led to a historic moment in 1980 when she was named Athletic Director at

Malabar High School, becoming the first woman in the entire state of Ohio to hold that prestigious position. This was a testament not only to her skill but also to her commitment to empowering girls.

Driven by a lifelong commitment to personal and professional growth, Laura earned her master's degree in 1982. She then dedicated her final years in education to serving students as assistant principal at Malabar until her retirement.

Beyond her professional achievements, Laura's heart belonged to her community. She was involved at the First Congregational Church, Mansfield Garden Club, Mansfield Symphony Chorus and was a longtime volunteer at the Mehock Relays, living a life defined by service.

The Laura Evilsizor McElfresh Fund, thoughtfully established by

her stepdaughter, Molly McCue, ensures that Laura's passion for education and her dedication to helping students achieve their potential will continue to inspire and provide opportunities for generations to come.

How to give to the Laura Evilsizor McElfresh Fund

You can ensure Laura's dedication to education and equal opportunity continues to thrive.

Every gift to The Laura Evilsizor McElfresh Fund directly supports students who are seeking either a college degree or career technical education certificate.

You can donate online at richlandcountyfoundation.org or write a check to the Richland County Foundation and note the fund on the memo line.

SCHOLARSHIP FUNDS

- Frank & Bee Ackard Memorial Fund
- Marcia A. Baer Ontario Schools Teaching Scholarship
- Robert G. & Mary Nell Beer Scholarship Fund
- Meg Black Memorial Scholarship Fund
- Black Women United Scholarship for Success Fund
- Thomas C. & Virginia A. Blizzard Fund
- Joseph T. "Jep" Bloor Memorial Scholarship Fund
- Mary Jane Bolus Scholarship Fund
- Emily Campbell Brown & Dr. Charles Gailey Brown "First Generation to College" Fund
- Karyne & Joe Carey Scholarship Fund
- Mary & Maxton Case Fund
- Children's Theatre Foundation, Inc. Endowment Fund
- Christ Lutheran Church of Lexington Scholarship Fund
- James H. Clements II Memorial Scholarship Fund
- Consolidated Scholarship Fund
- Cornerstone Freewill Baptist Church Scholarship Fund
- Pam Crawford Nursing Scholarship Fund
- Davidson Scholarship Fund
- Tim Davis, Jr. Scholarship Fund
- Shelley Dees Memorial Fund
- Neil Doerman Bowling Green State University Scholarship Fund
- Neil Doerman North Central State College Scholarship Fund
- Dean A. & Eleanor H. Eckert Fund
- Marilyn J. & David P. Eckstein Memorial Scholarship Fund
- Joseph W. Elrod Scholarship Fund
- Miriam & Russell Ferrell Scholarship Fund
- M.I. & Feenie Fillweber Scholarship Fund
- Mark S. Fisher Memorial Scholarship Fund
- **Robert E. Fisher Family Fund**
- George & Pam Fonseca Scholarship Fund
- Phil Ford Scholar Athlete Scholarship Fund
- S.N. & Ada Ford Scholarship Fund
- Diane L. Gibson Memorial Scholarship Fund
- Earl H. Goetz Fund in Honor of Major McGowan
- Earl H. Goetz Fund in Honor of Vern Stover
- William G. and Margie Kauf Hailey English Scholarship Fund
- Eugene & Ruth Oestreich Harsch Scholarship Fund
- Charles H. & Dorothy B. Hickox Memorial Scholarship Fund
- Ocie Hill Scholarship Fund
- Betty J. Horner Scholarship Fund
- Susan L. Jaynes Memorial Scholarship Fund
- Monica M. Kaye Memorial Fund
- Edwin Park Kell Scholarship Fund
- Mary M. Kowalchik Scholarship Fund
- Lexington Alumni Association Scholarship Fund
- Lexington Kiwanis Club Scholarship Fund
- Licensed Practical Nurse Assoc. of Ohio, Division #5 Scholarship Fund
- Reggie Luby Scholarship Fund
- Ruth E. Lutz Fund
- Mansfield Noon Lions Club Scholarship Fund
- Mansfield Rotary Centennial Scholarship Fund
- Patricia Maxwell Scholarship Fund
- Sandy Mazur / Spherion Excellence in Leadership Scholarship Fund
- Eleanor Searle McCollum Scholarship Fund
- Nancy McConnell Special Education Scholarship Fund
- **Laura Evilsizor McElfresh Scholarship Fund**
- Mentzer Scholarship Fund
- John L. Morley Memorial Scholarship Fund
- Alan and Sharon Mottayaw Scholarship Fund
- Ontario Alumni Assoc. Scholarship Fund
- Helen Keating Ott Library Scholarship Fund
- Katy Ault Phillips Memorial Scholarship Fund
- Richland County Medical Auxiliary Scholarship Fund
- Richard David Ronk Memorial Scholarship Fund
- Grace S. & Joe R. Roby Scholarship Fund
- Roby Family Fund
- Fran & Warren Rupp Scholarship Fund
- Eleanor S. Ryckman Memorial Scholarship Fund
- The Richard & Mary Schuttera Fund
- Schraedly-Patterson Scholarship Fund
- **Claire Siegenthaler Proto Scholarship Fund**
- A. Richard Stofer Scholarship Fund
- Dorris C. Stofer Scholarship Fund
- Steve Shoenfelt Memorial Scholarship Fund
- Paul & Adelyn Shumaker Fund
- **Robert W. & Margaret A. Soulen Scholarship Fund**
- Donald F. Thompson Fund
- Frederick L. & Harriett S. Tracy Scholarship Fund
- Richard & Sally Uhde STEM Scholarship Fund
- University & College Access Network Scholarship Fund
- University Club Educational Foundation CTE Scholarship Fund
- University Club Educational Foundation-James P. Weldon Memorial Scholarship Fund
- Gregory VanScyoc Memorial Scholarship Fund
- Helen S. Weldon Scholarship Fund
- James P. Weldon Scholarship Fund
- William M. Weldon Scholarship Fund
- Walter W. Willis Rotary Scholarship Fund
- Marilyn A. Wilson Scholarship Fund
- The Sherrilyn R. Wilson Languages Scholarship Fund
- Ashley Yetzer Memorial Scholarship Fund
- Yuncker Memorial Fund

Bold Type indicates new fund in 2025



Community Investment Officer Bobby Rhea talked to students about college and career technical education scholarships offered by the Foundation at the Junior Achievement Inspire event held at the Richland County Fairgrounds.



The Richland Carrousel Park celebrated its 34th year of operation downtown. John & Mimi Fernyak were vital to the renaissance of downtown Mansfield in the late 80s and early 90s. They led a project to build the Richland Carrousel downtown which opened in 1991, the first new hand-carved wooden carrousel in the country in decades. The Richland Carrousel was the catalyst for additional development and attraction downtown. The Carrousel became the centerpiece of the Historic Carrousel District attracting families and encouraging others to renovate surrounding buildings. The Carrousel Community Trust Fund at the Foundation was established in 1998 to support the organization.



UNRESTRICTED FUNDS

- Betty J. Adair Fund
- Anonymous Donor Community Support Fund
- P.K. Athmaram, MD Fund
- Hejjaji & P.K. Athmaram, MD Fund
- C. Wilson & Josephine Mayberry Barnes Fund
- Robert B. Black Fund
- Roger A. & Elizabeth Thomas Black Fund
- Betty J. Blackstone Fund
- Virginia A. & Thomas C. Blizzard Fund
- Board Discretionary Fund
- Marion B. Bowers Fund
- Katharine C. Bristor Fund
- Roy G. & Nancy Y. Brown Fund
- Helen M. Burkholder Fund
- Joan B. & Truman Clark Fund
- Rex E. & Marjorie Sue Collins Fund
- Community Endowment Fund
- John B. & Pearl R. Conard Charitable Fund
- Consolidated Memorial Fund
- Marian M. Constance Fund
- William R. & Mary Jane Cress Fund
- Pearl M. Danback Fund
- Earle J. & Dottie Deems Fund
- Dean A. & Eleanor H. Eckert Fund
- Jessie L. Eckert Fund
- **Dorothy E. Elsasser Fund**
- Doris J. & Robert H. Enskat Fund
- David W. & Louise W. Evans Fund
- David N. & Miriam G. Feiser Memorial Fund
- Fellows Fund
- Charles C. Fox Fund
- Florence Fox Fund
- James H. Germany Fund
- Carl B. & Marie L. Gibson Fund
- Earl H. Goetz Fund
- C. Eugene & Sara A. Goin Fund
- Roger M. & Elizabeth B. Gray Fund
- James H. Hoffman Fund
- Herbert S. Jones Fund

- Jesse LaDow Fund
- Major Robert & Helen Ludwick Unrestricted Fund
- Nanciann P. McCormick Fund
- Dell Armstrong McMillen Fund
- Verdabelle Plank Miller Fund
- Dr. Donald E. Mills Fund
- Milton C. & Mary Louise Oakes Fund
- Katherine L. Parker Fund
- Peck Fund
- Catherine L. Rall Fund
- Edna K. Rex Fund
- Jane W. & John Bradley Rhind Fund
- Richland Gives Day of Giving Fund
- Betty Deisler Risser Fund
- Dell M. Robinson Fund
- John & Dell Robinson Family Fund
- Margaret Hay Russell Fund
- Alice B. and Allen M. Sanford Fund
- Jean U. & George V. Sauter Fund
- Esther Fickes Shaffer Fund
- Shelby Home & Public Health Endowment Fund
- Thomas A. & Clara H. Siegenthaler Fund
- Mary C. Slabaugh Fund
- Walter C. Stevens Family Fund
- Mary Mead Sturges & Robert Sturges Memorial Fund
- Alan P. Tappan Fund
- Heloise H. Tappan Memorial Fund
- Paul R. Tappan Fund
- W. Richard Tappan Fund
- Pauline S. Treisch Fund
- Charles R. Underhill Fund
- Mary L. Ward Fund
- Raymond & Lorraine Welte Fund
- Mary S. Wilsdon Fund
- Marion Draffan Wisdom Fund
- Charles G. Young Family Fund
- F. Wayne & Isabel Bogan Young Fund

Bold Type indicates new fund in 2025

UNRESTRICTED FUNDS offer the donor and Foundation the broadest options to address and to impact the community's current and ever-changing needs.

The Foundation awarded a grant for the new Sterkel Park, a space designed for everyone to enjoy, regardless of age or ability. The accessible and inclusive park, features playgrounds, walking paths, an open-air pavilion, pickleball, ping pong, EV charging stations, and free public Wi-Fi. Photo courtesy of Destination Mansfield.



FIELD OF INTEREST FUNDS allow our donors the opportunity to support specific interests within a broad area such as children's programs, the arts, education, the elderly, or health services.

Richland Academy of the Arts held a ribbon-cutting for its new Tap-Jazz Studio as part of the "Empower the Arts" Capital Campaign. The Foundation awarded a grant for the project.

FIELD OF INTEREST FUNDS

- Ronald L. & Janeen E. Adams Fund
- Banks-Willeke-Bunfill Fund
- George W. Blymyer Fund
- Henry A. & Melissa J. Booth Memorial Fund
- James R. Brook Fund
- Betty Butler Fund
- Chambers Family Foundation Fund
- Child Care Choices Fund
- Emeline Fate Christian Memorial Fund
- Peter S. Clark Memorial Fund
- Scott F. Coffin Fund
- Fran Conley, Joanne Williams & Betty Finlayson Fund
- Connections Fund
- Consolidated Individual Assistance Fund
- Lillian R. Dickson Fund
- Dean & Eleanor H. Eckert Fund
- Frances Fern Ecki Fund
- Mimi and John Fernyak Fund
- Bob & Esther Fry Fund
- Richard David Gardner Fund
- Richard R. & Veda J. Gardner Fund
- Gift of Grain Fund
- Steve Goldman Fund
- Guy T. Goodman Trust Fund
- Mike Greene Memorial Fund
- Charlotte B. Gugler Fund
- James H. Hoffman Fund
- James A. Jones, MD Memorial Fund
- Helen Kaufman Fund
- Land Preservation Fund for Richland County
- Lexington Congregational Church Legacy Fund
- Margaret Ann Lindley Fund
- Charles Lootens Fund
- Esther G. Lutz Fund

- Floyd H. Lutz Fund
- Ralph C. Lutz Fund
- Betty Martin Elementary Education Fund
- A. Robert & Eve Matthews Fund
- Barbara A. Mau Field of Interest Fund
- Michael Robert McBride Memorial Fund
- Harry & Lois McCullough Fund
- Eleanor Searle McCollum Teacher & Education Fund
- Leona M. Miles Fund
- Verdabelle Plank Miller Fund
- Mid Ohio Drug Prevention Coalition Fund
- Mary J. Poticny Fund
- Realizing Richland Fund
- Earl J. & Carlie Leona Muth Memorial Fund
- Scattergood Fund
- Katharine McIntyre Shaffer Fund
- Siebert Arts Fund
- Sarah M. Siegenthaler Fund
- Howard & Majoria S. Smith-Bellville Community Trust Fund
- Smokeless America Foundation Fund
- Ethel Mayer Southeast Community Fund
- The Store Fund
- Summertime Kids Fund
- Heloise H. Tappan Estate Fund
- Paul R. Tappan Fund
- Teacher Assistance Program Fund
- Sarah B. Thomas Fund
- **Traffic Safety Fund**
- Voegele-Bahl Endowment Fund
- Ed Wadman Scleroderma Research Fund
- Ralph O. & Sarah L. Wise Fund
- Women's Fund
- Fund for Young Children with ALD

Bold Type indicates new fund in 2025



Daniel Karger, a sophomore majoring in Marketing at Ashland University, was a summer intern at Richland Soil and Water Conservation District. The Fran and Warren Rupp Fund funds interns at Richland County nonprofits year-round.



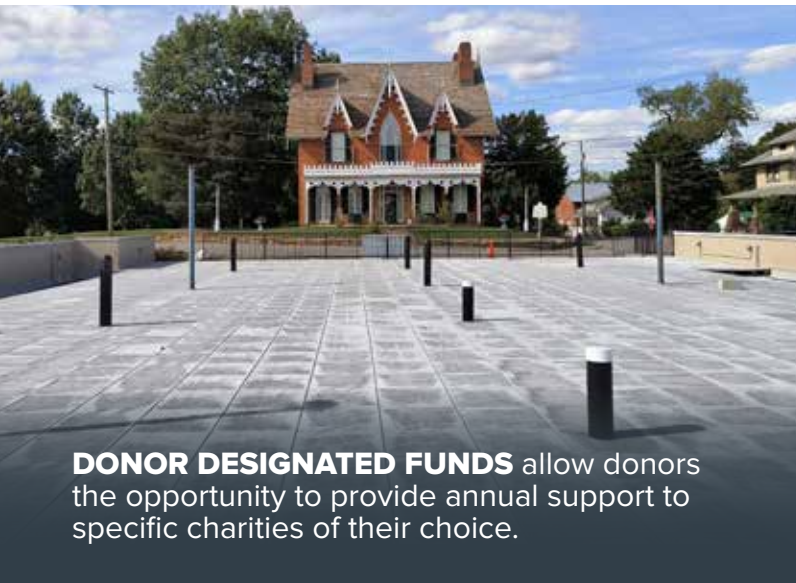
Hannah Markley, a Madison Comprehensive High School student, participated in the High School Speech Pathologist Mentoring Program provided by Mid-Ohio Education Service Center. The program provided juniors and seniors with 60 hours of immersive career preparation experience, including mentorship with in-district Speech-Language Pathologists (SLPs), a curriculum aligned to licensure, and opportunities for career pathway advising. The Connections Fund awarded a grant for this program.



DONOR DESIGNATED FUNDS

- Charles V. & Constance D. Adair Fund
- Alzheimer's Association of NCO Endowment Fund
- Marcia A. Baer Ontario Schools Athletic Dept. Equipment for Girls Sports
- Michael & Tina Bennett Fund
- John F. & Elizabeth W. Bissman Fund
- Raymond & Bessie Bixler Memorial Fund
- Esther M. Black Fund
- Betty J. Blackstone Fund
- Thomas C. & Virginia A. Blizzard Fund
- Boy Scouts of America Endowment Fund
- John S. & Laura Barr Brant Fund
- Chiudioni Memorial Fund
- Clear Fork Valley Foundation Fund
- Rex E. & Marjorie Sue Collins Fund
- Croghan Family Fund for Renaissance Performing Arts
- Croghan Family Fund for Richland Academy
- Mary E. Delp Fund
- Downtown Mansfield Inc. Brickyard Maintenance Fund
- Finefrock Memorial Fund
- First Congregational Church of Mansfield, OH Permanent Endowment Fund
- Founders Fund
- Forrest W. Freeman, MD & Florence J. Freeman Fund
- Friends of the Richland County Park District Fund
- Gerald F. Fuddy Fund
- Richard R. & Veda J. Gardner Fund
- Earl H. Goetz Memorial Fund

- Earl H. Goetz Fund in Honor of Major McGowan
- Earl H. Goetz Fund in Honor of Vern Stover
- Harland L. and Joan M. Groves Fund
- James H. Hoffman Fund
- Fred B. Hout Memorial Fund
- David E. Hughes Fund
- Keyser Library Fund
- Jessamine L. Lewis Fund
- Lucas Local Schools Sustaining Fund
- Esther G. Lutz Fund
- Floyd H. Lutz Fund
- Ralph C. Lutz Fund
- Ruth E. Lutz Fund
- Mansfield Art Center Endowment Fund
- Mansfield Civitan Club Fund
- Mansfield Mehock Relays Committee Fund
- Mansfield Police Department Fund
- Mansfield University Foundation Endowment Fund
- William & Katherine Jane McCarrick Fund
- McGowan Courage Awards Fund
- John A. & Florence B. Mintz Fund
- Alan and Sharon Mottayaw Fund
- Arthur W. Negin Memorial Fund
- Katherine M. Norem Fund
- North End Community Improvement Collaborative Inc.
- Milton C. & Mary Louise Oakes Fund
- Gertrude M. Odson Fund
- Ohio Genealogical Library Endowment Fund
- OSU/NCTC Photo Arts Fund
- Plymouth Area Historical Society Museum Endowment Fund
- Rowland & Delight Patricia Poth Fund
- Rainbow's End Christian Center Fund in Memory of Elizabeth Copp
- Realizing Richland Fund
- Renaissance Performing Arts Assoc. Inc. Fund
- Rich History Alliance Fund
- Richland Community Development Group Fund
- Richland County Sheriff's Office Fund
- Roby Family Fund
- Eleanor S. & Stanley J. Ryckman Music Endowment Fund
- Alice B. Sanford Memorial Fund
- Marian L. Stauffer Fund
- Third Street Family Health Services Endowment Fund
- Turley Raemelon Scholarship Fund
- Betty Thompson Wagner Memorial Fund
- Dr. Rebecca Sue Wappner Memorial Scholarship Fund
- Merris & Jean Welge Fund for the Ontario Police Dept.
- Diana Wilkinson Memorial Fund
- Charles G. Young Family Fund



DONOR DESIGNATED FUNDS allow donors the opportunity to provide annual support to specific charities of their choice.

The Richland County Historical Society was awarded a grant to convert a building at 64 Surrey Road into a tiled plaza park on its upper open-air level. The Oak Hill Terrace project is across the street from Oak Hill Cottage. The space will become a venue for events and a gathering space for the community. Photo courtesy of Richland County Historical Society.

A DONOR-ADVISED FUND allows families and individuals to make charitable contributions, while retaining the ability to recommend grants to their chosen nonprofits over time.



Connections Fund committee members attended a volunteer and information session led by Fostering Family Ministries. Holly Christie, RCF Senior Community Investment Officer, Siera Marth-May, Nyasha Oden, Rachel Schag and Marcella Smith stuffed 100 bunnies which were given to children in foster care.

DONOR ADVISED FUNDS

- Brian Arthur Adair Fund
- B & O Trail Capital Fund
- Paul H. & Susan Gallagher Bailey Fund
- F. Loyal & Judith B. Bemiller Fund
- Donald S. & Clara Louise Black Fund
- Robert & Esther Black Family Foundation Fund
- Blessed to Give Fund
- Dr. & Mrs. Stanley L. Brody Fund
- Burnell-Evans Family Fund
- Doug Castle Legacy Fund
- Compassion in Action Fund
- Shelby Cooper Memorial Fund
- DeLaney Family Fund
- Ethan DeLaney Memorial Fund
- **Do Good Things Fund**
- Earick Family Trust Fund
- Jeff Ellington Legacy Fund
- Carl & Annamarie Fernyak Fund
- For Good. For Ever. Trustee Legacy Fund
- Bob & Judy Fox Family Fund
- Gorman Fund
- John P. Gross Family Fund
- Hamilton Insurance Fund
- Linda Hansen Frary Memorial Fund
- Harmon Family Fund
- Hansen Fund for Women & Girls
- Helvetia Fund
- Jennette C. Hartman Fund
- Fred B. & Marian J. Hout Fund
- William F. and Kathleen C. Hurdle Fund
- Kaufman Family Fund
- Barbara & George H. Keyser Fund
- Konstam Family Fund
- Lindeman Family Fund
- Justin & Lynn Marotta Fund
- Eleanor McCollum Foundation Fund
- Annette L. McCormick Fund for the Environment
- The Remy-McCollough Family Trust Fund
- Metzger Family Foundation Fund
- George A. & Olive L. Miller Fund
- Miller/Pattillo Memorial Fund
- Mind Body Align Charitable Fund
- MP Marion Fund
- Damon Mauk Memorial Fund
- Jana & Pat Mulherin Fund
- Mary Ann Nore Donor Advised Fund
- Jones Porter Nauman Family Fund
- Northwest Community Fund
- Richland Source Community Fund
- Grace S. & Joe R. Roby Fund
- Regional Manufacturing Coalition Fund
- Rotary Club of Mansfield - Tom Doty Community Fund
- Fran & Warren Rupp Advised Fund
- Sandy Cross Donor Advised Fund
- Ann Hartman Schettler Fund
- David E. & Theresa E. Siebold Fund
- Richard & Lorraine Shrilla Fund
- Pamela H. & Thomas R. Siegenthaler Fund
- Matthew P. & Linda H. Smith Fund
- **Rand & Mary Smith Fund**
- Wray C. & Janet B. Smith Fund
- Sringeri Community Fund
- Christopher Mark Stull Fund
- Robert J. & Stella F. Sutter Fund
- Richard G. & Helen Taylor Fund
- Third Street Family Health Services Donor Advised Fund
- Thomas Family Fund
- Richard C. & Sally H. Uhde Fund
- Warner-Kafer Family Fund
- We Above Me Alex Switzer Memorial Fund
- Marion Draffan Wisdom Fund

Bold Type indicates new fund in 2025



AGENCY ENDOWED FUNDS offer nonprofits the opportunity to build an endowment which may support or provide an annual revenue stream for the overall operations of the organization. Organizations not only benefit from this additional revenue but also from the Foundation's financial stability and integrity that assures their donors that their gifts will be prudently managed.

AGENCY ENDOWED FUNDS

- Adlyn and Daniel Lichenstein Youth Orchestra Fund
- Area Agency on Aging Ohio District 5 Fund
- Carrousel Community Trust Fund
- Catalyst Life Services Endowment Fund
- Children's Theatre Foundation, Inc. Endowment Fund
- Discovery School Endowment Fund
- Domestic Violence Shelter Fund
- Charles A. & Doris G. Farina Endowment Fund
- First Congregational Church Endowment Fund (D&I)
- First Presbyterian Church (U.S.A.), Mansfield, Ohio Endowment Fund
- Hospice of North Central Ohio Endowment Fund
- Hospice of North Central Ohio Children's Bereavement Camp Fund
- Malabar Farm Foundation Endowment Fund
- Mansfield Area Y Endowment Fund
- Mansfield Cancer Foundation Endowment Fund

- Mansfield Cancer Foundation - Pat Kracker Breast Cancer Fund
- Mansfield Christian School Endowment Fund
- Mansfield Fine Arts Guild, Inc. Endowment Fund
- Mansfield Playhouse Endowment Fund
- Mansfield Reformatory Preservation Society Fund
- Mansfield Richland County Public Library Winnie Greer Fund
- Mansfield Symphony Society Endowment Fund
- North Central State College Foundation Fund
- Ohio Bird Sanctuary Endowment Fund
- Ontario Public Schools Technology Fund
- OSU-Mansfield Business Program Endowment Fund
- OSU-Mansfield Faculty Development Endowment Fund
- OSU-Mansfield Scholarship Endowment Fund
- Percy Hall Youth Orchestra Fund
- Pioneer Career & Technology Center Fund
- Renaissance Performing Arts Endowment Fund
- Richland Academy Endowment Fund
- Richland County Historical Society Endowment Fund
- Third Street Family Health Services Agency Fund
- United Way of Richland County Endowment Fund
- Visual Bucket List Foundation Endowed Fund
- Wayfinders Ohio Fund
- YWCA of Mansfield Endowment Fund



"Trapped in a Video Game" Author Dustin Brady visited Malabar Intermediate School students. He provided a fun and engaging presentation. The visit was made possible by the Fran and Warren Rupp Fund of the Richland County Foundation.

Pictured lower right: Wayfinders Ohio, the local homeless shelter, received a grant to renovate a building at 661 Park Avenue East to create a larger shelter. RCF Senior Community Investment Officer Siera Marth May, Wayfinders Executive Director Miles Parsons, RCF Community Investment Officer Bobby Rhea, and RCF Board of Trustees member Jana Mulherin tour the new facility.



Richland Public Health received a grant for its "Look Before You Lock" program. It is a three-year pilot program to prevent child vehicular heat stroke deaths by providing free smart safety sensors to families throughout Richland County. The initiative addresses a need following a preventable child death in the community. The device detects when a child is left in a car seat and sends immediate alerts to a caregiver's smartphone.



AGENCY DESIGNATED FUNDS are not endowed funds, so the nonprofit may use the principal of the fund. Like the Agency Endowment funds, these funds support or provide an annual revenue stream for the overall operations of the organization.

AGENCY DESIGNATED FUNDS

- Community Action for Capable Youth
- Friendly House Association Capital Fund
- Humane Society of Richland County Fund
- Kingwood Center Fund

- Lexington Local Schools - Terry McCammon Scholarship Fund
- Malabar Farm Foundation Fund
- Mansfield Aviation Club Fund
- Mansfield City Public Schools Fund
- Mansfield City Schools Fine Arts Fund
- North Central Ohio Land Conservancy Designated Fund
- Pioneer Career and Technology Center Equipment and Technology Fund
- Richland County Historical Society Fund
- Richland Newhope Industries Fund
- Salvation Army Fund

FELLOWS FUND DONORS

Visionary Fellows (\$5,000 and up)

- Dr. Richard E. Adams* (by William and Kathleen Hurdle)
- Naomi J. Albers*
- Donald N. Beddard*, MD (by friends)
- Frank T. Black Foundation
- Joseph J. Fackler*
- Bradford S. Groves
- Mo Minich* (by Ralph E. Minich)
- Ralph E. Minich
- Ruth M. Newman* (by Dr. William C. Newman)
- Dr. William C. Newman
- Carl E. Pfeifer
- Norma E. Pfeifer
- G. Stanford Schneider
- Shafer Valve Company
- Michael Wilging* (by Bruce & Sondra Wilging)

Legacy Fellows (\$2,500 or more)

- Raymond Baquet* (by family & friends)
- **Charma Behnke**
- James E. Bierly* (by family & friends)
- Dan Burns* (by friends & associates)
- Douglas C. Freer* (by family & friends)
- Larry L. Gibson, MD
- **Becky Hoffman (by Dr. William C. & Ruth Newman)**
- **Ed Hoffman (by Dr. William C. & Ruth Newman)**
- Eleanor Homesley*
- William & Kathleen Hurdle
- Dr. Norman & Heidi Jones
- Joan W. Meese* (by family & friends)
- **Ruth M. Newman* (Dr. Bill Newman)**
- Joyce M. Walters
- Richard M. Walters

Fellows (\$1,000 or more)

- Deborah Adams
- Ivy L. Amos
- Helen Anderson
- Sina Baughman Applegate* (by Clare E. Applegate)

- Sharon L. Arnett
- Aten & Mennetti Insurance Agency
- Betty Bacquet* (by Meredith N. Stevens)
- **Raymond Bacquet* (by Ephraim H. Bacquet)**
- Margaret G. Balyeat* (by children)
- Dr. Donald N. Beddard
- Craig Behnke
- Eric Behnke
- Heather Behnke
- F. Andrew Black
- Thomas C. Black* (by F. Andrew Black)
- Donald C. Blasius* (by friends & former Tappan company associates)
- Daniel L. Blay (by Joanne H. Humphrey)
- Dr. Joseph J. Bocka
- Dr. Louis Jeremy Brown* (by Alice Sanford)
- Brigitte A. Burnell
- William A. Calhoun* (by family and friends)
- Samuel H. Campbell
- Clara I. Carew* (by John H. Carew)
- John H. Carew
- Dan R. Carmichael
- David L. Carto
- Louise Allison Carto* (by family & friends)
- Willis Frank Carto* (by family & friends)
- Frances Christian (by Miles Christian)
- Miles Christian
- Helene H. Christiansen
- Judge Richard M. Christiansen
- Matthew B. Cockley* (by Macky Cockley)
- Marjorie Sue Collins
- Rex E. Collins
- John W. Cook, Jr.
- Judith A. Croghan
- Thomas H. Croghan, MD
- John O. Crouse* (by Hugh W. Crouse, II)
- Nancie K. Cummins (by Richard S. Cummins)
- Otis M. Cummins, III

- James D. Curry, MD
- Garry Davidson
- Aaron Davis
- Suzanne C. Davis
- Earle J. Deems
- G. E. (Dottie) Deems* (by Earle J. Deems)
- Ann J. Deley* (by Altrusa International of Mansfield)
- Thomas A. Depler
- Robert H. Enskat
- Katherine N. Fernyak
- Pamela S. Fleming
- William E. Flinn* (by Dorothy B. Flinn)
- Frances B. Gaubatz
- Nick Gesouras
- Judith Gibson
- Carl B. Gibson* (by Dr. David M. Gibson)
- Dr. David M. Gibson
- Marie L. Gibson* (by Dr. David M. Gibson)
- Earl H. Goetz
- Steve Goldman* (by Bill & Carol Goldman)
- James C. Gorman
- Jeffrey S. Gorman
- Michele S. Gorman
- Gayle Gorman Green (by General Richard Green)
- William Grogoza* John P. Gross (by Draffan family)
- Henrietta M. Hainer* (by Elizabeth H. Prestel)
- W.R. Hainer* (by Elizabeth H. Prestel)
- Mariann S. Hand
- Cameron Haring
- Ruth Oestreich Harsch* (by Eugene C. Harsch)
- Albert W. Hartman* (by family and friends)
- Jill Hand Hautzenroeder
- Jon Hautzenroeder
- Frederick R. Heifner* (by family and friends)
- Geneva C. Heifner* (by Pamela H. Siegenthaler)
- Oliver P. Heller* (by family and friends)
- James D. Henson
- Pricilla W. Herbert

- C. J. Hire
- Phyllis F. Hire
- Fred B. Hout
- Edith B. Humphrey
- William F. & Kathleen C. Hurdle
- John J. Kastelic
- Margaret E. Kay (by Thomas Kay)
- James W. Kehoe
- George H. Keyser* (by Barbara Keyser)
- Ann L. Konstam
- Janice L. Kuhn
- Marion W. Lederer* (by Robert W. Lederer)
- Robert L. Lee
- Timothy L. Lehman
- David Letizia (by Pete & Susan Bailey)
- Daniel K. Lichtenstein* (by Sally S. Lichtenstein)
- L.O.L.'s (by Thomas & Margaret Kay)
- Robert E. Mabee
- Mansfield Assemblies
- A. Robert Matthews
- E. William McCarrick
- James McCormick* (by Nanciann McCormick)
- Nanciann McCormick
- Pauline Keller McKinney* (by Barbara Keller Lederer)
- Betty L. Massa
- E. Tom Mattox
- Joan Watson Meese
- Robert B. Meese
- Leona M. Miles
- National City Bank
- Ohio Horseman's Council, Richland County Chapter
- Ray Piar
- Glenna R. Plotts
- David Pollock (by Jack Pollock)
- David Pollock* (by family & friends)
- Delight Patricia Poth* (by Dr. James Jones)
- Betty E. Preston
- Burton L. Preston (by Prudence Preston)
- Burton R. Preston



FELLOWS FUND (continued)

- W. Lee Preston (by Burton Preston)
- John Bradley Rhind
- Betty D. (Bets) Risser
- Dell M. Robinson (by John Robinson)
- John Robinson
- Joe R. Roby
- John S. Roby
- Joan G. Ross (by W. Thomas Ross)
- Allen M. Sanford
- Irene McCanne Sanford* (by Allen M & Henry M. Sanford)
- Henry B. Sanford* (by Allen M. & Henry M. Sanford)
- Jean U. Sauter
- Rev. Clifford Schutjer
- Patricia Schutjer, PhD
- Angela Scurci
- Kyle Evan Shaw* (by Douglas & Judith Brunk)
- Charles Patrick Siegenthaler* (by Sally S. Lichtenstein)
- C. Peter Siegenthaler (by Sally S. Lichtenstein)
- Mary Mead Siegenthaler (by Sally S. Lichtenstein)
- Clara H. Siegenthaler
- John H. Siegenthaler
- Pamela H. Siegenthaler
- Thomas A. Siegenthaler
- Thomas A. Siegenthaler* (by family and friends)
- Thomas R. Siegenthaler
- Peter A. Sminchak* (by family & friends)
- Janet B. Nicely Smith (by Rev. Wray C. Smith, D.D.)
- Rev. Wray C. Smith, D.D. (by Janet B. Nicely Smith)
- David J. Strub
- Gary R. Stroup
- Richard G. Taylor
- U of M/OSU (by F. Loyal Bemiller & O.M. Cummins, III)
- Michael Vucelic (by Inge S. Vucelic, Ph.D.)
- Martha A. Walter (by Richard L. Walter)
- Richard L. Walter
- Jean E. Welge
- Merris A. Welge, Jr.
- John W. Welsh
- Fred J. Wiecher, MD
- Doris Williams
- J. George Williams

* Contributed in memorium

Bold Type indicates new Fellowship or new level of contribution in 2025



The Women's Fund

RICHLAND COUNTY FOUNDATION

The Women's Fund announced the JoAnn Dutton Volunteer Community Service Award winner. The award was named in honor of JoAnn Dutton, former executive director of the Mansfield YWCA. It celebrates women who devote a significant amount of time and energy in a meaningful way to local charitable organizations.

The 2025 winner was Vivian Winters, the founder of a program called People Helping People which serves a meal to over 100 people a day, every day of the year. Winters has worked to collaborate with community partners to ensure that people in our community receive at least one meal a day.

"It takes a community to take care of their people. There is no income verification or paperwork process. If you are humble enough to stand in line, then we will give you love and a meal," said Winters.

Women's Fund Chair Amy Hiner, JoAnn Dutton Volunteer Community Service Award Winner Vivian Winters and Women's Fund Chair-Elect Amy Goyal at the Women's Fund Grant Awards Luncheon.



Children at the First English Lutheran Church Early Learning Center play with a toddler magnetic LED STEM Center funded by a Women's Fund grant.



Megan Wolford of the YMCA, Susan Martin of the YWCA, Wendy Thompson of the Child Development Center, Kakiea Brooks an in-home child care provider, and Melissa Canada an in-home child care provider, provided information during a Child Care Round Table held at the Foundation.



The Women's Fund hosted a "Game On" event at the Buckeye Imagination Museum for men and their daughters or granddaughters. Amir Evans looks on as his daughter enjoys a prize she won.

Women's Fund helps improve local child care

In 2018, the Women's Fund surveyed the community to better understand the specific and unique needs facing women's economic mobility. Access to quality and affordable child care was identified as one of the biggest barriers.

Data shows that access to high-quality early childhood education lays the foundation for better educational outcomes for young children. Access to high-quality, affordable child care allows individuals, disproportionately women, to stay in the workforce and strengthen their economic prosperity. Child care providers, also disproportionately women, make low wages and work without benefits to support themselves or their families.

Over the past six years, the Women's Fund and its partners have invested over **\$348,000 in local child care.**

The local YWCA Childcare Research and Referral Office is a key partner in this effort. It offers support including referrals to child care programs for families looking for care, information for families about indicators of quality in child care programs, classes for parents on a variety of parenting topics, professional development opportunities for educational professionals, business supports to childcare programs, coordinating initiatives that impact childcare programs, and collaboration with local community organizations to develop services and programs that affect children, families, and early childhood education professionals.

Groundwork Ohio recognized the Women's Fund of the Richland County Foundation with the 2025 Groundwork Champion Award, in honor of its ongoing commitment to help alleviate child care barriers across Richland County.

Women's Fund Chair Amy Hiner and Chair-Elect Amy Goyal accepted the award during Groundwork Ohio's Momentum 2025 conference. Groundwork Ohio is a nonpartisan advocacy organization focused on improving the lives of young children and their families through policy and public awareness.

For several years, the Women's Fund of the Richland County Foundation has awarded grants to make quality child care affordable and accessible to women in the local community, as the organization believes that child care is critical for women's economic mobility. From joining Groundwork Ohio's women's coalition,

attending advocacy days, presenting key data on child care challenges across the state, and sharing lived experiences during webinars, The Women's Fund of the Richland County Foundation embodies the true definition of a champion.

The award honors long-standing cross-sector partners who have helped lay the groundwork for change through steadfast leadership, meaningful collaboration, and bold investment in the early childhood movement.

"The Women's Fund is energized by the efforts of other civic groups who help elevate the conversation in our communities like Groundwork Ohio.

While the challenges around child care are the same across many communities, we believe solutions are best identified and addressed through local synergies and partnerships," said Women's Fund Chair Amy Hiner.



Women's Fund Chair-Elect Amy Goyal, Groundwork Ohio President & CEO Lynanne Gutierrez, and WF Chair Amy Hiner at the Groundwork Ohio Momentum Conference.



WOMEN'S FUND

Benefactors \$5,000 or more

- Alumni Roofing
- Helen Anderson
- Eleanor Beagle* (by Nancy L. Jackson)
- Elizabeth M. Black
- Elizabeth T. Black
- Elizabeth T. Black* (by Frank T. Black Family Foundation)
- Robert and Esther Black Family Foundation
- Constance F. Brody, PhD
- Joan H. Brown* (by John T. Brown)
- Carol Chambers
- Mary Jean Chambers
- Candice Chaffee
- Mary Jane Cress
- Patricia DeCenso
- David N. & Miriam G. Feiser Memorial Fund
- Annamarie Fernyak (by Katherine N. Fernyak)
- Katherine N. Fernyak
- **Katherine N. Fernyak (by Dr. Susan E Fernyak)**
- Stephanie Fernyak, Dr. (by Katherine N. Fernyak & Susan E. Fernyak)
- Susan E. Fernyak, MD (by Susan E. Fernyak & Katherine N. Fernyak)
- First Energy Foundation
- Judy Gibson
- Sara A. Goin
- Carol R. Goldman
- Marjorie N. Gorman* (by Gayle Gorman Green)
- The Hansen Fund
- Hazel R. Hansen
- Phyllis F. Hire
- Betty J. Horner
- Marian J. Hout by the Fred B & Marian J Hout Fund
- Edith B. Humphrey
- Nancy L. Jackson*
- Margaret Kay* (by Thomas R. Kay)
- Barbara A. Keyser
- Marjorie M. Kieffer
- Eleanor M. & Bill Kline

- Barbara Lederer* (by Robert Lederer)
- Kristine Lindeman
- Betty L. Massa* (by Mark Berno)
- Mechanics Savings Bank
- Howard Menzel
- Park National Bank
- Claire Proto* (by Thomas R. and Pamela H. Siegenthaler)
- Mary Riedl
- Salli S. Rohm
- Pamela H. Siegenthaler
- Elizabeth L. Smith
- Linda H. Smith (by Benjamin, Lauren & Christopher Smith, & Emily Richardson)
- Matthew P. & Linda H. Smith
- Spectrum
- Ottelia B. Stoodt* (by Salli Rohm)
- Carol B. Taylor
- Helen Taylor
- Helen Taylor (by family & friends)
- Frances K. Welsh (by Frances & family)
- YMCA 1976 Girls Swim Team

Patrons \$2,500 or more

- Betty J. Adair
- Pat Addeo
- Dorothy Durham Ashbaugh*(by Sara A. Goin)
- Elsie May Hobday Ashbaugh*(by Sara Goin)
- Janice Beddard
- Elizabeth T. Black* (by Elizabeth M. Black)
- Marlene Bisel
- Mary K. Bolin
- Joan H. Brown
- Fran Christian* (by Helen Taylor)
- Clare Duncan Clemens (by Susan Duncan Gentile)
- Paula Cohen
- Portia Cummins Carto* (by Elizabeth M. Black)
- Portia Cummins Carto* (by O.M. Cummins III, Sara L. Cummins, & Suzanne C. Davis)
- Nancie Cummins
- Gwen Cunningham (by Dr. & Mrs. Andrew Fahmy)

- Elizabeth Daniels
- Suzanne C. Davis
- **Dr. Donald & Patricia DeCenso**
- Yvette Fahmy (by Dr. & Mrs. Andrew Fahmy)
- Erin B. Fain, MD
- John & Katherine N. Fernyak (by Susan E. Fernyak)
- **Dr. Stephanie Fernyak (by Dr. Susan Fernyak)**
- Susan Duncan Gentile
- Miriam T. Gilbert
- Meredith Rae Haber* (by Rebecca A. Smith)
- Harriet Steele Keating Harbage* (by Karen K. Bierly)
- Alberta Harber (by Arlene Senser)
- Margaret Harrison (by Helen Taylor)
- Donna Hartnett* (by friends & family)
- Jill Hand Hautzenroeder
- Janet E. Wobbecke Hudson
- Key Foundation
- Heidi Jones
- Barbara Zaugg Joudrey
- Virginia D. Kirkwood
- Margaret A. Lindley
- Manairco Employees (by Gayle Gorman Green)
- Marilou Marshall
- Mansfield Dental Auxiliary
- Marilyn McCready
- **Betty L. Massa**
- MedCentral Employee Civic Fund
- Jeanne Meisse
- **Marcy Parry**
- Pearl Neer Plank* (by Verdabelle P. Miller)
- Lydia J. Reid
- Gretchen Rohm-Ensing (by Salli Rohm)
- Kristen C. Rohm (by Salli Rohm)
- Suzanne Schamadan
- Deborah M. Schenk
- Lillian Senser* (by Arlene Senser)
- Janet B. Nicely Smith
- **Helen Taylor (by Mary Jo Hull)**

- The Helen Taylor Family
- Karen Rohm Williams (by Salli Rohm)
- Janene Ann Yeater
- **10th Year Anniversary Founders-\$1,000 in 2006**
- Lucy A. Amsbaugh
- Mary Jo Black
- Leah Humphrey Blay (by Joanne Humphrey)
- Mary Jane Cress
- Steven O. Cummins and Karen Redfearn
- Lois C. Flinn* (by friends)
- Miriam E. Gilbert (By Miriam T. Gilbert)
- Anna Mae Jones* (by Mary Lou Herrold)
- Pamela H. Siegenthaler (by Geneva S. Cummins & Claire Proto)

Founders \$1,000 by Dec. 31, 1997

- Jeanne Alexander
- Mary E. R. Alletto
- Kristin Arnold
- P. K. Athmaram, MD
- Susan G. Bailey
- Cynthia Baker
- Michelle K. Ballinger Mary Ellen Barr* (by Carol Brown & Kathleen Mehl)
- Helen Bartlett
- Marianna Basting
- Charma Behnke
- Cindy Biggs
- Mary Jo Black
- Elizabeth H. Blay (by Daniel L. Blay)
- Maggie Bolin (by James R. Bolin)
- Billie Brandon, JD
- Emily Campbell Brown
- Clarita L. Burton
- Fran H. Christian
- Virginia Clay, PhD
- Geneva S. Cummins
- Sara L. Cummins
- Joyce A. Curry
- Diane M. Daniels
- Ann Drake
- Rose Ann Dunn
- JoAnn E. Dutton* (by Joseph Dutton)

- Ellen Eckert
- Deborah A. Exten
- Susan E. Fain (by Erin B. Fain, MD)
- Shelly E. Fisher
- Pamela S. Fleming
- Celia J. Flinn, MD
- Gayle Gorman Green
- Harriett Freeman (by Linda H. Smith)
- Peggy Jean Fry* (by Constance Ament)
- Veda J. Gardner
- Frances B. Gaubatz
- Julie A. Giunti* (by Laurie A. McKeon)
- Catherine D. Goldman
- Joetta Goodman
- Linda Haring
- Geneva C. Heifner* (by Pamela H. Siegenthaler)
- Laurie Hickox, DVM
- Joanne Humphrey
- Barbara J. Huston
- Charla A. Irvin
- Margaret M. Joyce
- Linda Kafer, PhD
- Julie Kleshinski
- Vicki Kolb
- Shannon S. Lang
- Karin Fleming Manning
- Elizabeth F. Marquardt
- Jane McKean
- Jane Meyer
- Henry P. & Marjory L. Michaels* (by Carol Michaels)
- Shirley Monica
- Judy & Larry Pabst
- Sophie Crittenden Polhemus
- Claire Siegenthlaer Proto
- Betty D. Risser
- Jane A. Risser
- Julia Rohles
- Alice B. Sanford
- Dell M. Robinson Sanford
- Deborah M. Schenk
- Arlene Senser
- Clara H. Siegenthaler
- Christopher M. Smith
- Elizabeth L. Smith (by Benjamin, Christopher, & Lauren Smith)
- Lauren Z. Smith

- Cassandra Stein
- Sally Stevens
- Catherine K. Stout
- Zoe M. Swain
- Marcine Taylor
- Lynn E. Humphrey Timmons
- Heather, Melissa, & Susan Tsavaris
- Cindy Kalinoff Watson
- Anne C. Wendling
- Suzanne S. Wilson

Advocates \$1,000 since Jan. 1, 1998

- **Dr. Ron Abrams & Billie Brandon**
- Deborah L. Adams
- **Tim & Jeanne Alexander**
- Altrusa International, Inc. of Mansfield
- American Association of University Women
- Ivy Amos
- **Lucy Amsbaugh**
- Kristin Arnold
- Judith Bemiller
- **Elizabeth T. Black (by Elizabeth M. Black)**
- John B. Black* (by Jane A. Risser)
- F. Andrew Black
- Martha Jane Black
- Claire Blay (by Joanne Humphrey & Dan Blay)
- Teresa Cooperider
- Bambi Couch Page
- Mary C. Craig
- Emma Lousie Cummins (by Geneva S. Cummins)
- Steven O. Cummins and Karen Redfearn
- Barbara Cuning
- Rees Davis* (by family & friends)
- Suzanne C. Davis (by Elizabeth M. Black)
- JoAnn DuVall (by Ivy Amos)
- Kay Fathe* (by Helen Taylor)
- Christine Fernyak (by Katherine N. Fernyak)
- Marcy Sweda Flinn* (by Celia J. Flinn, MD)
- Pamela Fonseca
- Alice A. Frazier
- Harriett Freeman

- Esther M. Fry
- General Motors - Mansfield Plant
- Sandra Gibbons
- Bernice Goldman* (by Bill & Carol Goldman)
- Mariann S. Hand
- Edward Hansen (by Sandy Gibbons & Hazel R. Hansen)
- Alta J. Hartman* (by Maxine Smith)
- Amy Hiner
- Amy Hockett
- Avis Hood* (by Jeanne Meisse)
- Catherine Anders Huff* (by Barbara McBride)
- Lisa & Scott Humphrey
- Marie Jackson
- Friends of Marilyn John
- Hilda Johnson* (by Betty J. Adair)
- Nancy Joyce
- James W. Kehoe (by Shelby Foundation)
- Terry B. Kehoe (by Shelby Foundation)
- Pauline Keller (by Robert W. Lederer)
- Nancy Kolb
- Ann L. Konstam
- Jane Ann Korol* (by Stanley Korol)
- Marion W. Lederer (by Robert W. Lederer)
- Martha Ellen Stahl Lenhart (by LaDonna J. O'Neal)
- Margaret Lin
- Kathy Lindeman (by Kristine Lindeman)
- LTV Copperweld
- Martha and Josephine McFarland* (by Susan Madura)
- Pauline Keller McKinney* (by Barbara Lederer)
- Dixie Mehock
- Carol Melchior
- Mary Moloney* (by Jane McKean)
- Gabriella Morando* (by Jim & Elizabeth Morando)
- Agnes E. Moritz* (by Fred Moritz)
- Jana Mulherin
- Katherine Norem* (by Katherine N. Fernyak)
- Georgia Kelly Nosker (by Judith Croghan)
- Sharlene Neumann
- Cynthia B. O'Neal
- Jane K. O'Neal* (by William & LaDonna O'Neal)
- Bonnie Palmer (by Kristine Lindeman)
- Carol Payton
- Rani Piar
- Norma E. Pfeifer* (by Carl E. Pfeifer)
- Glenna Plotts
- Mary Kay Ransdell
- Sumitra, Raviraj* (by Jotika Shetty)
- Cynthia M. Roby
- Bonita Ronk
- Kim J. Ronk (by Bonita Ronk)
- Carolyn L. Rusteburg
- Nancy Peppard Rupp* (by family & friends)
- Christine Schenk* (by family & friends)
- Jotika Shetty
- Theresa Siebold
- Dr. Chiron W. Smith* (by Lucy A. Amsbaugh)
- Dorothy Correll Smith* (by Lucy A. Amsbaugh)
- Jan Smith
- Suzanne Sumner (by Stella Sutter)
- Christine Sutter (by Stella Sutter)
- Rosemary J. Sutter
- Theresa Sutter (by Stella Sutter)
- Martha B. Tawse
- JoAnn Taylor (by Helen Taylor)
- Louise H. Taylor
- Dorothy Van Voorhis* (by Sally Workman)
- Deanna West-Torrence
- Sally Workman* (by Bruce Workman)

Bold Type indicates new level of giving
* Contributed in Memorium



HONOR AND MEMORIAL GIFTS

- Ivy Amos
- Lucy Amsbaugh
- Sonya Apodaca
- Richard Baker
- Jerry & Cory Bandy
- Julie Bannister
- Dr. Robert & Linda Barkett
- Rev. Richard L. & Sally Beal
- Mark & Bobette Berno
- Karen Bierly
- Martha Jane Black
- Elizabeth Black
- Judith A. & Douglas C. Brunk
- Robert Cassity
- Jon & Linda E. Chambers
- Michael & Carol W. Chambers
- Katherine Chillemi
- Gary & Jane Clemans
- Barbara Collins
- Lewis M. & Elaine A. Craven
- David Crawford
- Joyce Curry
- Elizabeth Daniels
- Polly Davis
- Theresa Depperschmidt
- Beverly Doty
- Andrea Downs
- Ralph Eguren
- Robert & Linda Eyerly
- Ronald R. & Brenda L. Eyerly
- Dr. Andy & Lynn E. Fahmy
- John C. & Mimi Fernyak
- Alma L. Fisher
- Harvey R. & Dr. Evie B. Freeman
- Diana Froberg
- John Futtly
- Robert Gangloff
- Frances Gaubatz
- Mary Ann Gawelek
- Susan Gentile
- Sally Gesouras
- Bill & Carol Goldman
- Ruth Ann Good
- Rich Green & Gayle Gorman-Green
- Charles Hahn
- Dr. Frederick N. & Linda D. Haring
- James Henry
- Dr. John & Terry Heringhaus
- Amy Hiner
- Mary Jo Hull
- Linette Jackson
- Yolanda Kirschner
- Ann Krucek
- Leslie Lancy
- Barbara Lee
- Margaret Lin
- Anne & David B. Loucks
- Carol Loveless
- Siera Marth-May
- C. Raymond Marvin
- Mark Masters
- James & Jane McCoy
- Rhonda Melnik
- Olive Miller
- Karl & Jill Milliron
- Nine Three Zero Fund
- Deanne Osgood
- Jason Painley
- Debra Philpott
- Harold & Muriel Pritchett
- Emily Richardson
- Richland County Bar Association
- Dr. John Riedl
- Jane Risser
- Jennifer Shilt
- Linda Smith
- Snowberry Family Trust of Pikes Peak Community Foundation
- Cheryl Snyder
- Gary Stroup
- Suzanne Sumner
- Stella Sutter
- Cristine & Theresa R. Sutter
- Maura Teynor
- Carrol B. & Marilyn K. Varney
- Dr. Blake D. & Gere Wagner Sr.
- Rachel Weber
- Frances Welsh



The Richland County Land Bank received a grant for its new Thriving Home Exterior Rehab program. Over the next three years the program aims to stabilize at least 48 owner-occupied houses. The program will offer owner-occupants a grant of up to \$21,250 for exterior home rehabilitation. Homeowners will be responsible for 15% of the total cost, with a maximum budget of \$25,000.



The Osborne Meese Academy supported nonprofits this year with individual sessions with consultants. Haley Bedocs and Mary Frankenfield of the Mansfield Shakespeare Company met with Vinyl Marketing President Colleen Cook. OMA is a training program designed to enhance the capacity of local nonprofit organizations.

2025 DONORS

- A**
 - Robert Abbot
 - David Adair
 - Matthew Adair
 - Patricia Adair
 - Patricia Addeo
 - Edward Akinyemi & Andrea Mauk
 - Patricia Akinyemi
 - Ivy Amos
 - Lucy Amsbaugh
 - Sonya Apodaca
 - Jen Arbaugh
 - Amity Arnold
- B**
 - Jed & Laurie Baker
 - Richard Baker
 - Stacey Baldasare
 - Jerry & Cory Bandy
 - Mike Bandy
 - Julie Bannister
 - Jack Bargahiser
 - Dr. Robert & Linda Barkett
 - Jack Barrett
 - Mark Baserman
 - Danielle Basham
 - Rev. Richard L. & Sally Beal
 - Marshall Beard
 - Janice Beddard
 - Dr. Fred & Mrs. Mina Behi
 - Karen & Jim Bemiller
 - F. Loyal & Judith Bemiller
 - Michael L. & Christina M. Bennett
 - Kenneth E. & Sherry L. Berger
 - Mark & Bobette Berno
- C**
 - Carlos Calaf
 - Candice Chaffee Trust
 - Tammy Canfield
 - Richard P. & Patricia A. Carlisle
- D**
 - Robert Berry
 - Bethany Biddle
 - Karen Bierly
 - Big Fish Gen Store & Bait LLC
 - Lynn Billing
 - Marlene Bisel
 - Elizabeth Black
 - Martha Jane Black
 - Mary Black
 - The Robert & Esther Black Family Foundation
 - Katie Blake
 - William Bloor
 - Joseph Bocka
 - Alli Boggs
 - Roderick Bogner
 - Marissa Bologna
 - Marcel & Barbara Bovet
 - Beth Brandenburg Walker
 - Billie Brandon
 - Candace Brenner
 - Beverly Brook
 - Charles Brown
 - Helen Brown
 - Marcia Brown
 - Robert Brown
 - Amy Brunell
 - Dan Brunell
 - Judith A. & Douglas C. Brunk
 - Elizabeth Buttil
- E**
 - David D. & Carolyn M. Carto
 - Robert Cassity
 - James Chalmers
 - Jon & Linda E. Chambers
 - Michael & Carol W. Chambers
 - Patricia Chilcote
 - Katherine Chillemi
 - Holly Christie
 - Dottie Cleckner
 - Steve & Lynn Cleland
 - Gary & Jane Clemans
 - Barbara Collins
 - Melanie Conaway
 - Alex Conover
 - Annamarie Cooper
 - Maribeth Cooper
 - Corwin Appliance Service
 - Melanie Corwin
 - Ryan Craft
 - Lewis M. & Elaine A. Craven
 - David C. & Julia S. Crawford
 - Pamela Crawford
 - Nancie Cummins
 - The Bruce Martin Cummins & Geneva Siegenthaler Fund
 - Joyce Curry
- F**
 - Judith Downing
 - Andrea Downs
 - Dakota Durbin
- G**
 - Martti Eckert
 - Venus Edwards
 - Ralph Eguren
 - Bonnie Elias
 - Estate of Dorothy Elsasser
 - Scott Evans & Brigette Burnell



The Legacy Society was established by the Board of Trustees in the year 2000 to recognize individuals during their lifetime who have made plans to leave a gift to this community in partnership with the Richland County Foundation. This gift may be through their estate plans, written in their will, including the Foundation as a future beneficiary of their IRA, insurance policy, remainder trust, or other similar planned gift.

The Richland County Foundation acknowledges the generous people who have planned a legacy to their community through gifts that will eventually come to the Foundation for the benefit of others.

Legacy Society member Judith Stroup is with RCF President Allie Watson, RCF Senior Community Investment Officer Siera Marth-May, and Judith's husband, Gary.

LEGACY SOCIETY

- Pete H. & Susan Gallagher Bailey
- Bruce & Laurie Baker
- Amy S. Bargahiser
- Bob and Natalie Beckert
- Vin* & Jo Black
- Billie Brandon, JD
- Beverly M. Brook
- David & Julia Crawford
- Dr. James* & Joyce Curry
- Conn and Carol Dandareau
- Beth DeLaney
- Don Edwards
- Jana S. Fisher
- **John C. and Mimi Fernyak**
- Leslie Gardner
- **T. Kerry Green**
- Bradford S. Groves & Martha D. Bickley
- John F. & Lin H.* Harkness
- John and Chriss Harris
- Linda A. Hering & Richard H. Otto
- Carol S. Kautz
- Kenneth Livingston
- **Edward May**
- Laurie McKeon
- Everett W. & Beverly Miller
- **Janny Nauman**
- Allison C. Nunnally
- Ray & Rani Piar
- Carol Ramsey
- Dr. Theresa A. Roth-Groth
- Nelson & Stana Shogren
- Lauren Smith
- **Mark Stokes and Debra Hecht Haley**
- Judith E. Stroup
- Robert* & Stella Sutter
- Ralph & Martha Turley
- Larry & Jean VonBlon
- Jone Watson
- Allie Watson & Sam Chamberlin
- Donny & Rachel Weber
- Merris & Jean Welge
- Sherrilyn Wilson

* Deceased

Bold Type indicates new legacy member in 2025



The Foundation awarded a grant to the Mansfield Police Department for Charlie, a therapy K9, to comfort students, teachers, and staff at Mansfield Senior High School. His handler is MPD School Resource Officer Matthew Brewster. RCF Senior Community Investment Officer Siera Marth-May plays with Charlie.



Chauntae Powell painted at her new home on Glenwood Heights Avenue in Mansfield. A grant to Habitat for Humanity of Richland and Crawford Counties helped Chauntae realize her dream of home ownership.

- Robert & Linda Eyerly
- Ronald R. & Brenda L. Eyerly
- F**
- Dr. Andy & Lynn E. Fahmy
- Fernyak Family CLAT
- John C. & Mimi Fernyak
- The Fetter Family Fund
- Margi Finnegan
- Nancy Fischer
- Alma L. Fisher
- Jana Fisher
- Mark P. & Jonni P. Ford
- Barbara Fraifogl
- Harvey R. & Dr. Evie B. Freeman
- Friends of the Mansfield Public Library
- Diana Froberg
- John Futty

- G**
- Molly Gaffney- Keebler
- Richard Gangloff
- Robert Gangloff
- Allyson Gatchall
- Glenna Gates
- Frances Gaubatz
- Mary Ann Gawelek
- Susan Gentile
- Lisa Geog-Huffman
- Kathy George
- Sally Gesouras
- Cora Gibson
- Dr. Lawrence L. & Judy Gibson
- The C. Eugene & Sara A. Goin Trust
- The Sara Ashbaugh Goin Revocable Trust

- Catherine Goldman
- Bill & Carol Goldman
- Rachel E. Gombosch
- Joetta Goodman
- Ruth Ann Good
- Rich & Gayle Gorman-Green
- Jeremy & Tambreia Gorrell
- Roberta Gosling
- Amy Goyal
- Pamela Graham
- Amy Greene
- Winston Greene
- Jamie Grover
- Jessica Grover
- Bradford Groves
- Jennie Groves
- Jason Guilliams

- H**
- Armin Hadziomerovic
- Charles Hahn
- Wilhamene Hardman
- Dr. Frederick N. & Linda D. Haring
- Ellen Haring
- John & Chriss Harris
- Katie Harris
- Donald L. & Rhoda H. Hart
- Lisa Hecht
- Heck Law Offices, Ltd.
- Bud & Sally Henderson
- Elliott Henson
- Stephany Hepner
- Dr. John & Terry Heringhaus
- Bradley A. & Kelly M. Herman
- The Hermit Club
- Chris & Amy Hiner
- Kevin Horrigan
- Sarah Horrigan-Ramos
- Bradley Hostetler
- Mary Jo Hull
- Joanne Humphrey
- Edie B. Humphrey
- Edith B. & Joseph E. Humphrey Family Foundation
- Mary Hunter
- William & Kathleen Hurdle

- J**
- Linette Jackson
- Jeremy Jacobs
- James H Schafer Revocable Living Trust
- Daryl Jeffrey
- Gordon Jones
- Robert S. & Sheila L. Sipes-Jones

- J Thomas Hipsher Fund
- Marc-Etienne Julien
- Julius Kitchens LLC

- K**
- Ann Kania
- Patricia Kastelic
- Joan Kaufman
- Jessica Kent
- Evelyn Kinzel
- Yolanda Kirschner
- Katherine Kleeman
- Deborah Kline
- Eleanir Kline
- Sherry Kolleda
- Karey & Vicki Koon
- Ann Krucek
- L**
- Rock Lamb
- Leslie Lancy
- David & Carol Latchik
- Barbara Lee
- Lexington Alumni Association
- Philip Lichtenstein
- Kristine Lindeman
- Margaret Lin
- Doris Lockhart
- Lost Run Foundation
- Anne & David B. Loucks
- Carol Loveless
- Ashley Loy
- Lybarger Insurance Agency Inc.

- M**
- Leah Macgregor
- Sara Mack
- Jordan MacWolff
- Pam Madore
- Pentti Maki
- Mansfield Aviation Club
- Mansfield Ohio Browns Backers
- Mansfield Richland County Public Library
- Mansfield Rotary Club Foundation
- Mansfield University Club Educational Foundation, Inc.
- Mark & Sharon Scheurer
- Eric Marotta
- Justin & Lynn Marotta
- Siera Marth-May
- Anissa Martinez
- C. Raymond Marvin
- Kristie Massa
- Sandy Mazur

- Elizabeth Mazzocco
- James & Jane McCoy
- Julie McCready
- Kimmy McCristall
- Molly McCue
- Robin McCullough-Bade
- Deborah McDaniel
- Patricia McGinty
- Mechanics Bank
- Georgia Meeks
- Michael Meeks
- Rhonda Melnik
- Cindy Metzger
- Eric Miller
- Olive Miller
- Steven Miller
- Pamela Milligan
- Karl & Jill Milliron
- Robert Mitman
- Tom & Kris Moloney
- Michael Moree
- Wayne & Jenny Motley
- Jana Mulherin

- N**
- Dr. Gary A. & Lucy B. Negin
- Sharlene Neumann
- Nine Three Zero Fund
- Nyasha Oden
- Ohio Race Day LLC
- The Ohio State University at Mansfield
- Deanne Osgood
- Richard H. Otto & Linda Hering

- P**
- Jason Painley
- Penny Palmer
- Billie Pariseau
- Matt Patrick
- Randa Payne
- Carol Payton
- Elizabeth Pentenburg
- Thomas Pentenburg
- Pepperidge Farm, Inc.
- Pepsi Beverages Company Mansfield
- James J. & Sandra K. Pfeiffer
- Debra Philpott
- Donna Pignatelli
- Debbie Porto
- Elizabeth Prather
- Betty Preston
- Burt L. & Prudence Preston
- Harold & Muriel Pritchett
- Jonathan Pulcini

- R**
- Lisa Reichert
- Linda Reisdorf
- David & Therese Remy
- Juliann Renner
- Bobby Rhea
- Emily Richardson
- Richland Academy of the Arts
- Richland Alternate Program
- Richland Carrousel Park, Inc.
- Richland County Bar Association
- Richland Lumber, Inc.
- Dr. John Riedl
- Hilliary Rinehardt
- Jane Risser
- Stephen Rizzo
- W. Thomas & Joan G. Ross
- Sarah Ross
- Rotary Club of Mansfield
- Donald Ruggery

- S**
- Diana Salen
- Francisco J Saucedo
- Amy Sauder
- Malia Scarnato
- Linda Schamber
- Ludwig E. & Debbie Schenk
- Brian & Krista Schmidt
- G. Stanford Schneider Trust
- Amanda Schneider
- Bob & Jodi Schraedly
- Jodi Scott
- Chelsy Seglund
- Fredrick Shaffer
- Tim Cooper
- Jennifer Shilt
- Sherrel Shoffstall
- Lorraine Shrilla
- David & Theresa Siebold
- Jenny Siegenthaler
- Dan L. & Jodi M. Siegenthaler
- John H. & Sondra Siegenthaler
- Pam Siegenthaler
- Nicole Simmons
- David Sipes
- Rev. David S. & Margaret Sipes
- Rex Skelton
- Benjamin Smith
- Michael J. & Joan M. Smith Jr.
- Linda Smith
- Marcella Smith
- Mark Smith

- Rand & Mary Smith
- Robert Smith
- S.N. & Ada Ford Fund
- Snowberry Family Trust of Pikes Peak Community Foundation
- Cheryl Snyder
- Kaitlyn Spangler
- Spherion Pennsylvania
- Les A. & Bonita S. Spring
- Joel Staich
- Darrell & Brenda Starr-Jude
- Anongtip Stewart
- Jack & Lorri Stewart
- Mebane Stolfi
- Keith Stoner
- Tara Stone
- Catherine Stout
- Gary Stroup
- Jane Studer
- Christopher Sumner
- Matthew Sumner
- Suzanne Sumner
- Cristine Sutter
- John A. & Theresa R. Sutter
- Stella Sutter

- T**
- Michael Tagg
- Lee Tasseff
- William & Susan Tepe
- Maura Teynor
- Chelsie Thompson
- Lynn & William Timmons Charitable Fund
- Dana Togliatti
- Emily Toms
- A.A. Touby
- Katherine Truitt
- Whitney Tyo

- U**
- Richard C. & Sally H. Udhe
- United Steelworkers Local 169

- V**
- Brad & Amy Van Voorhis
- Carrol B. & Marilyn K. Varney
- Tony & Melanie Vero
- Jean-Franois Vezina
- W**
- Joyce Wagner
- Dr. Blake D. & Gere Wagner Sr.
- Washington's Carpet One
- Allie Watson
- Rachel Weber

- Susan Weekly
- Molly Weigand
- Patricia Weigand
- Merris Welge
- Jack W. & Fran K. Welsh
- Sharon Wiegand
- J. George & Doris Williams
- Sherrilyn Wilson
- Amy Witchey
- WOB Accountants & Advisors
- Norman Wolfe
- Krin Woodbridge
- Cindy Wood
- Y**
- Angela Yahner



Providing support to local nonprofit organizations is one of the Foundation's goals. Community Investment Officer Bobby Rhea conducted a grant writing workshop for nonprofit staff members.



The Rotary Club of Mansfield McGowan Courage Award Fund honored students at its annual awards ceremony. Students from area schools were celebrated for their courage, resilience, and determination. Pictured is Brianna Studer with Rotary Club member Jennifer Alt and Madison Choir Director Craig Green.



**RICHLAND COUNTY
FOUNDATION**

181 South Main Street
Mansfield, OH 44902
419.525.3020 phone

richlandcountyfoundation.org

NON-PROFIT
ORGANIZATION
U.S. POSTAGE
PAID
MANSFIELD, OH
PERMIT NO.193



CFNS
ACCREDITED
FOUNDATION

The Richland County Foundation has been recognized for having organizational and financial practices that are in compliance with National Standards for U.S. Community Foundations.



The mission of the Richland County Foundation is to improve and enhance the quality of life in Richland County through strategic philanthropy and community leadership.

Provide Leadership and act as a catalyst in identifying and addressing emerging community needs.

Distribute Grants for charitable purposes in the areas of community & economic development, health & human services, arts & culture, education & youth, environment and churches.

Prudently Manage the Foundation's resources to achieve the maximum benefit for Richland County in perpetuity.

Identify and Cultivate Donors of all economic means and charitable interests.

Assist Donors in establishing funds to meet community needs and distribute proceeds in accordance with the donor's intent.

RCF Senior Community Investment Officer Siera Marth-May (middle) volunteered at the Mansfield-Richland Area Educational Foundation Nonprofit Fair held at the Ontario Center. She is pictured with Christine Myers of the Visual Bucket List Foundation and Jeff Parton of Park National Bank.